

- sigurnost
- savremen način života
- lux line



# CASCADIA

## lux line

DOBOJ



[www.betonplus.org](http://www.betonplus.org)



[www.facebook.com/betonplusdoo.doboj](https://www.facebook.com/betonplusdoo.doboj)

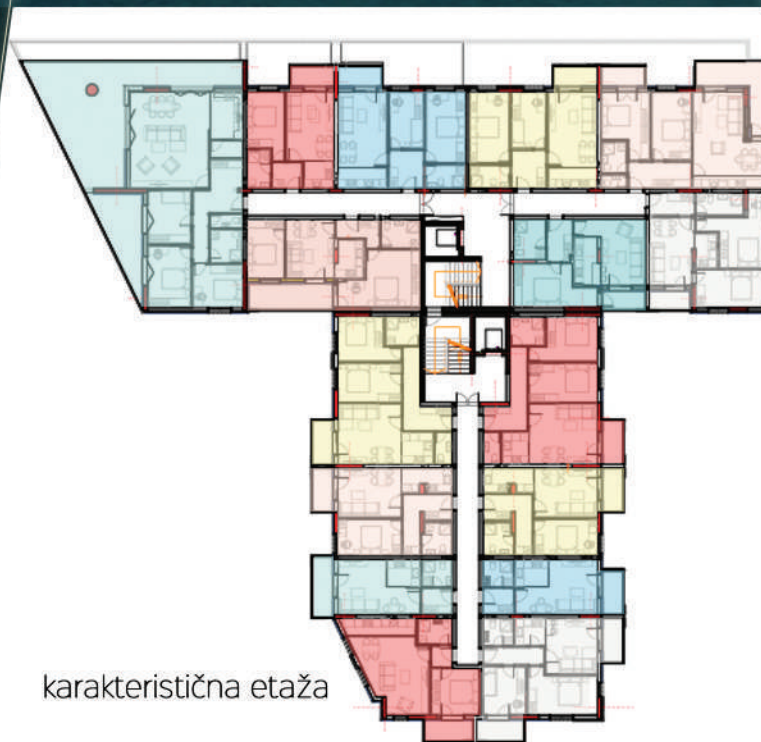


[www.instagram.com/](https://www.instagram.com/)

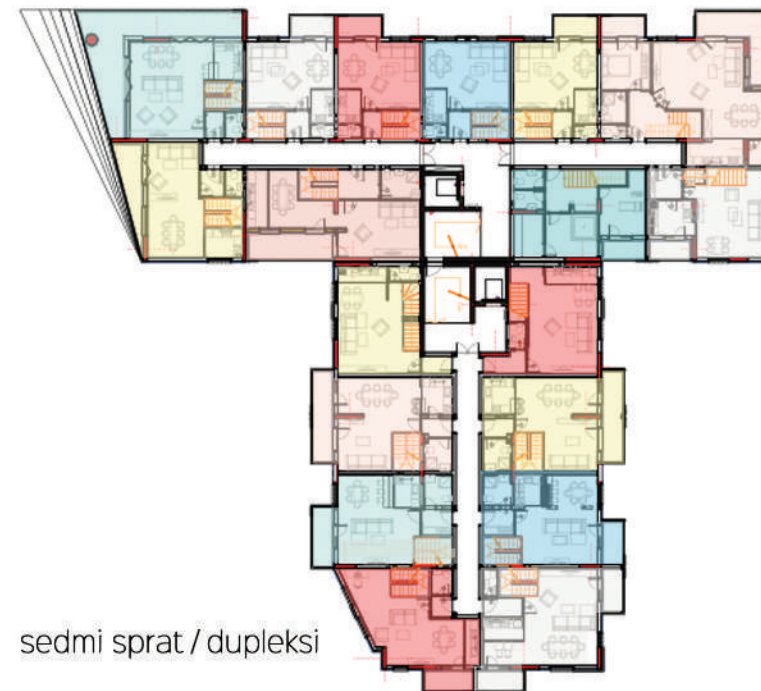




- 3 - podaci o objektu  
*informative page*
- 4 - lokacija  
*location*
- 5 - lamela 1  
*section 1*
- 6 - plan garaže - I1  
*underground garage plan*
- 8 - stanovi - I1  
*apartment display*
- 25 - dupleksi - I1  
*duplex apartments*
- 35 - lamela 2  
*section 2*
- 36 - plan garaže - I2  
*underground garage plan*
- 38 - stanovi - I2  
*apartment display*
- 46 - zajednički prostor - I1  
*building common area*
- 47 - dupleksi - I2  
*duplex apartments*
- 56 - kontakt informacije  
*contact information*



karakteristična etaža



sedmi sprat / dupleksi





STAMBENO - POSLOVNI OBJEKAT "CASCADIA"  
početak radova: maj 2021. godine  
završetak radova: septembar 2022. godine



U Ulici Kneza Miloša u Doboju, započeta je gradnja savremenog stambeno - poslovnog objekta, spratnosti Po + P + 7 + Galerija.

Atraktivna lokacija, savremeno arhitektonsko oblikovanje i posvećenost prilikom projektovanja su glavni aduti ovog objekta i ono što ga izdvaja od ostalih. Ušuškan u ulicu sa drvoredom lipa, prozirne spoljašnjosti i savremenih projektantskih rješenja, objekat prkosi svim negativnim konotacijama koje se vezuju za visoku gradnju savremenog doba. Objekat, okružen prirodom i svjetlošću nudi priliku za savremenim, zdravim i ugodnim životom. Gradnja ovog objekta za nas je ono što se u svijetu naziva 'passion project' - projekat u koji se upuštamo iz čiste ljubavi prema arhitektonskoj profesiji.

Struktura objekta je zamišljena tako da se u podrumu nalaze privatne garaže i zajednička podzemna garaža, prizemlje je namijenjeno poslovanju, a na spratovima su formirane stambene jedinice. U objektu je formirano ukupno 114 stambenih jedinica, od čega je 18 osmišljeno kao stanovi na dvije etaže - duplesi. Duplesi se nalaze na 7. spratu objekta. U zajedničkoj garaži su formirana ukupno 24 parking mjesta i 9 privatnih garaža sa ukupno 16 parking mjesta. Dodatna parking mjesta su predviđena van objekta. Objekat je podijeljen na LAMELU 1 i LAMELU 2.

Svaka od stambenih jedinica je opremljena elektronskom bravom (osim klasičnim ključem, vrata stana se otključavaju i karticom), klima uređajem, električnim roletnama, a pojedini stanovi su opremljeni i spoljašnjim jacuzzi kadama na prostranim terasama stanova. Unutrašnjost objekta i pristupni putevi će biti pokriveni video nadzorom, a pristup istom će biti omogućen svakoj stambenoj jedinici, putem ekrana koji će biti ugrađeni kod ulaznih vrata.

U objektu su predviđene zajedničke prostorije: teretana, jacuzzi i sauna, kao i zajednička prostorija sa čajnom kuhinjom i toaletima za okupljanja, koju stanari mogu koristiti prema svojim potrebama.

U objektu se planira ugradnja kvalitetnih i savremenih materijala, a namjeravamo da izađemo u susret željama naših klijenata.

U toku gradnje, u potpunosti možete učestvovati u oblikovanju svog životnog prostora, te će Vam naši arhitekti pomoći da dođete do najoptimalnijeg rješenja, u potpunosti prema Vašim željama.

Kontaktirajte nas, kako bismo što prije zakoračili u novi početak!

## Cjenovnik nekretnina u SPO "Cascadia"

Stanovi

od **1.870,00 KM/m<sup>2</sup>** sa PDV

Dupleks stanovi (7.sprat)

od **2.070,00 KM/m<sup>2</sup>** sa PDV

Parking prostor (podrum)

od **30.000,00 KM/mjesto**



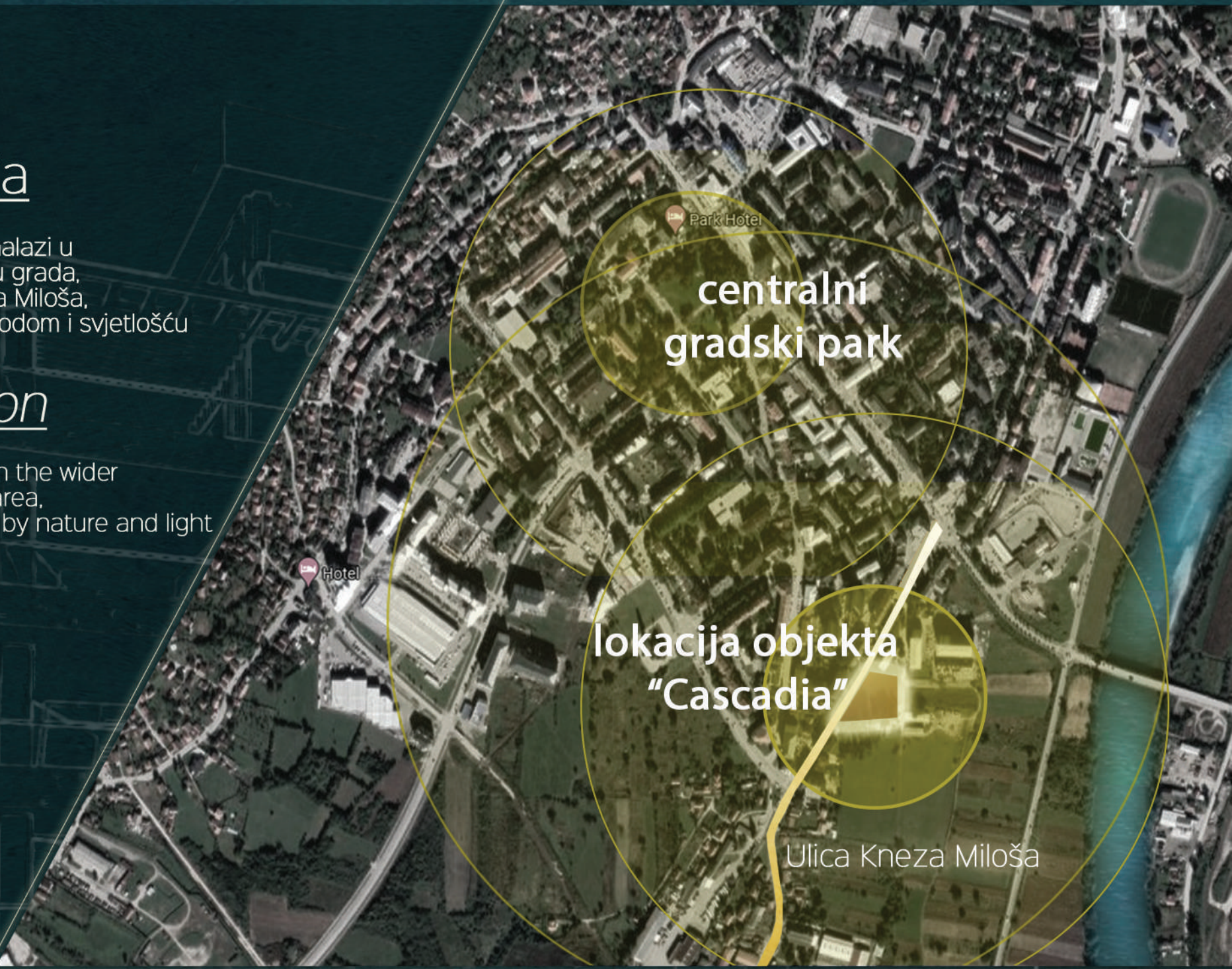


## lokacija

objekat se nalazi u širem centru grada, u Ulici Kneza Miloša, okružen prirodom i svjetlošću

## location

positioned in the wider city center area, surrounded by nature and light







## lokacija

objekat se nalazi u širem centru grada, u Ulici Kneza Miloša, okružen prirodom i svjetlošću.

## location

*positioned in the wider city center area, surrounded by nature and light*



# LAMELA 1

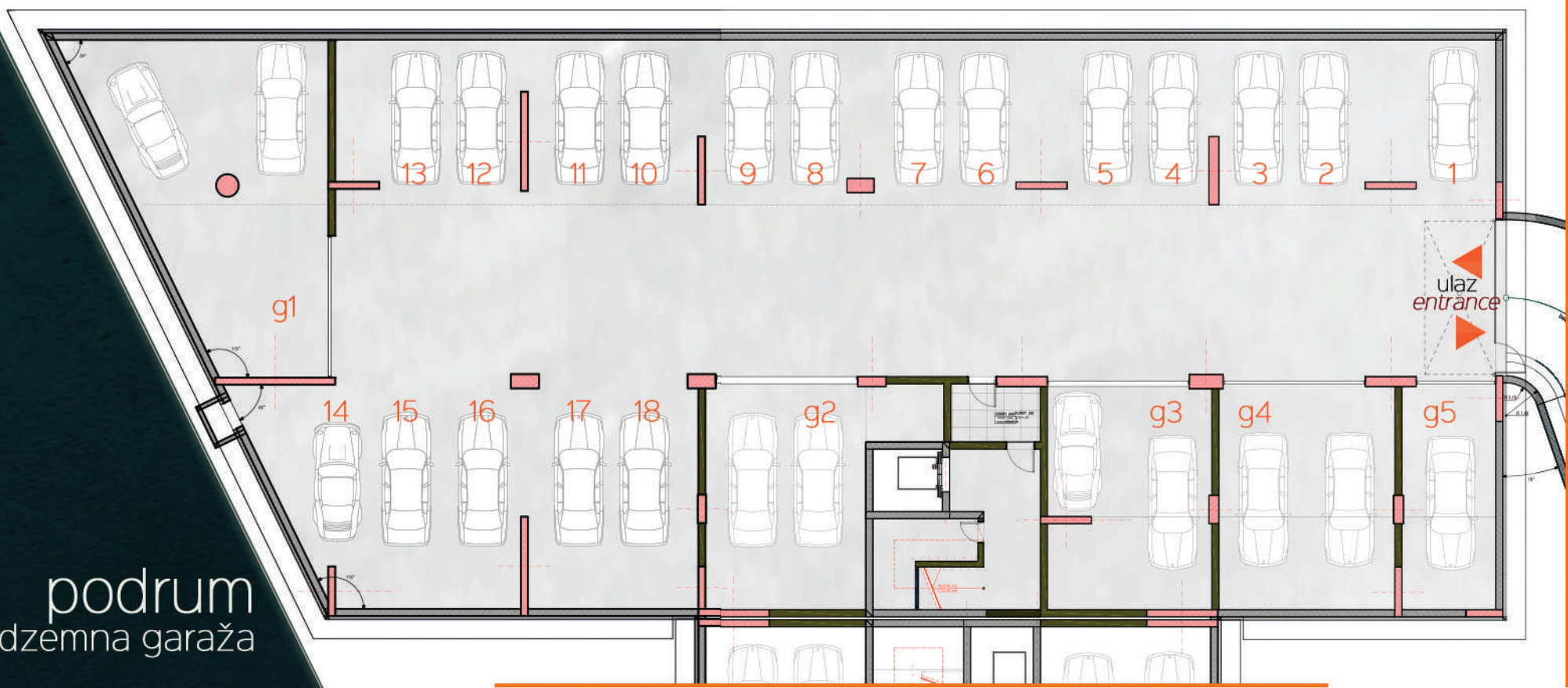
## SECTION 1







LAMELA 1



podrum  
podzemna garaža  
underground garage





GARAŽA BR. 1

2 parking mjesta ( 19 i 20 )  
P - 79,77 m<sup>2</sup>

GARAŽA BR. 2

2 parking mjesta ( 21 i 22 )  
P - 50,36 m<sup>2</sup>

GARAŽA BR. 3

2 parking mjesta ( 23 i 24 )  
P - 44,90 m<sup>2</sup>

GARAŽA BR. 4

2 parking mjesta ( 25 i 26 )  
P - 49,11 m<sup>2</sup>

GARAŽA BR. 5

1 parking mjesto ( 27 )  
P - 26,14 m<sup>2</sup>

ZAJEDNIČKA GARAŽA

18 parking mjesta







positioning in the building  
 položaj stana u objektu  
 1 2 3 4 5 6 7 G LAMELA 1

entrance  
 ulaz



apartment number

STAN 1 / 9 / 17 / 25 / 33 / 41

br.	prostorija	P (m <sup>2</sup> )	P*k (m <sup>2</sup> )	obrada poda
1	Hodnik	5.09	5.09	Keramika
2	Kupatilo	6.10	6.10	Keramika
3	Kuhinja	5.65	5.65	Keramika
4	Dnevni boravak	16.04	16.04	Parquet
5	Soba	14.61	14.61	Parquet
6	Lođa	3.74	2.81	Keramika
UKUPNO:		51.23	50.30	







positioning in the building  
 položaj stana u objektu  
 1 2 3 4 5 6 7 G LAMELA 1

ulaz entrance



apartment number

STAN 2 / 10 / 18 / 26 / 34 / 42

br.	prostorija	P (m <sup>2</sup> )	P*k (m <sup>2</sup> )	obrada poda
1	Hodnik	4.96	4.96	Keramika
2	Kupatilo	5.28	5.28	Keramika
3	Kuhinja	3.71	3.71	Keramika
4	Dnevni boravak	14.19	14.19	Parquet
5	Loda	3.62	2.72	Keramika
6	Soba	12.75	12.75	Parquet
7	Soba	15.44	15.44	Parquet
UKUPNO:		59.95	59.05	

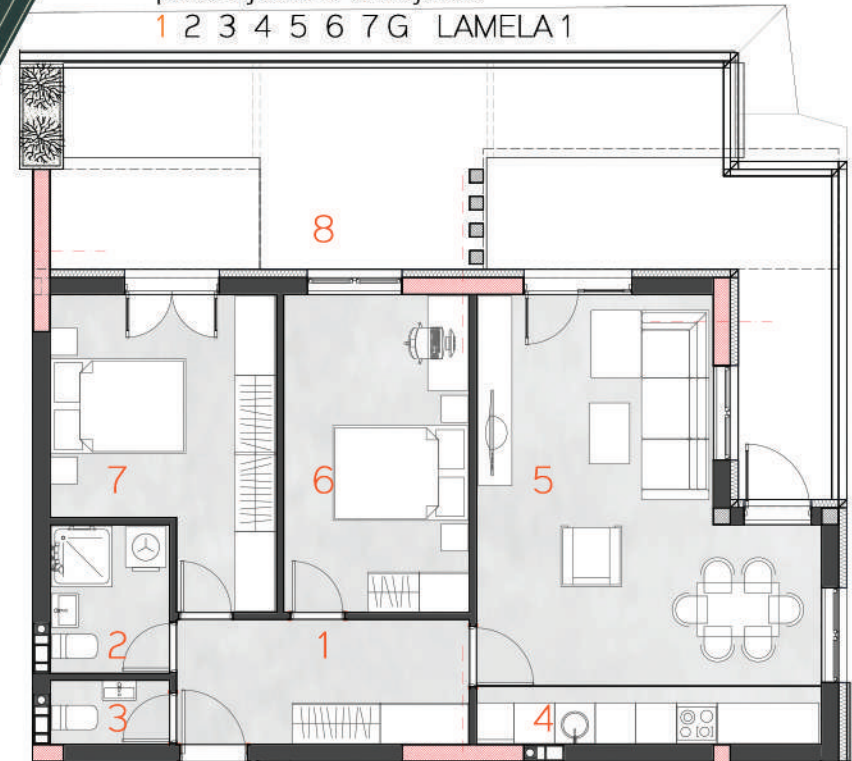






positioning in the building  
 položaj stana u objektu

1 2 3 4 5 6 7 G LAMELA 1



▲ ulaz entrance

apartment number

STAN 3

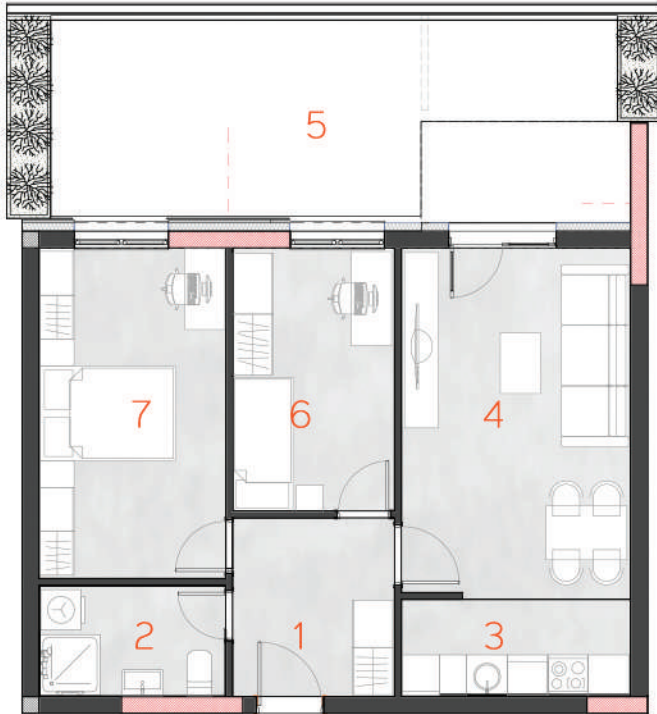
br.	prostorija	P (m <sup>2</sup> )	P*k (m <sup>2</sup> )	obrada poda
1	Hodnik	8.01	8.01	Keramika
2	Kupatilo	3.89	3.89	Keramika
3	Toalet	1.68	1.68	Keramika
4	Kuhinja	4.42	4.42	Keramika
5	Dnevni boravak	24.05	24.05	Parket
6	Soba	12.91	12.91	Parket
7	Soba	13.14	13.14	Parket
8	Loda	36.25	27.19	Keramika
UKUPNO:		104.35	95.29	







positioning in the building  
 položaj stana u objektu  
 1 2 3 4 5 6 7 G LAMELA 1



apartment number ▲ ulaz entrance

### STAN 4

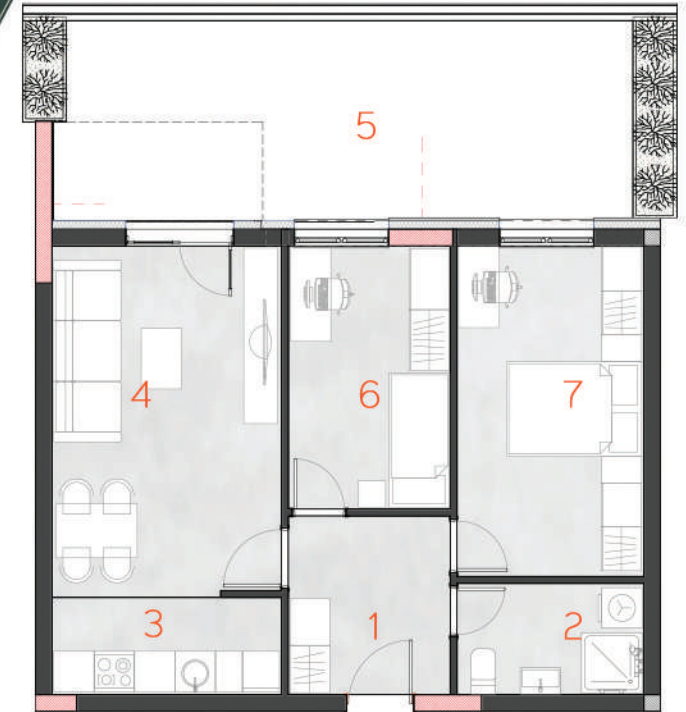
br.	prostorija	P (m <sup>2</sup> )	P*k (m <sup>2</sup> )	obrada poda
1	Hodnik	6.36	6.36	Keramika
2	Kupatilo	4.57	4.57	Keramika
3	Kuhinja	4.90	4.90	Keramika
4	Dnevni boravak	17.63	17.63	Parket
5	Loda	25.24	18.93	Keramika
6	Soba	9.37	9.37	Parket
7	Soba	13.57	13.57	Parket
UKUPNO:		81.64	75.33	







positioning in the building  
 položaj stana u objektu  
 1 2 3 4 5 6 7 G LAMELA 1



apartment number

▲ ulaz entrance

**STAN 5**

br.	prostorija	P (m <sup>2</sup> )	P*k (m <sup>2</sup> )	obrada poda
1	Hodnik	6.36	6.36	Keramika
2	Kupatilo	4.57	4.57	Keramika
3	Kuhinja	4.90	4.90	Keramika
4	Dnevni boravak	17.63	17.63	Parquet
5	Loda	25.24	18.93	Keramika
6	Soba	9.37	9.37	Parquet
7	Soba	13.57	13.57	Parquet
UKUPNO:		81.64	75.33	

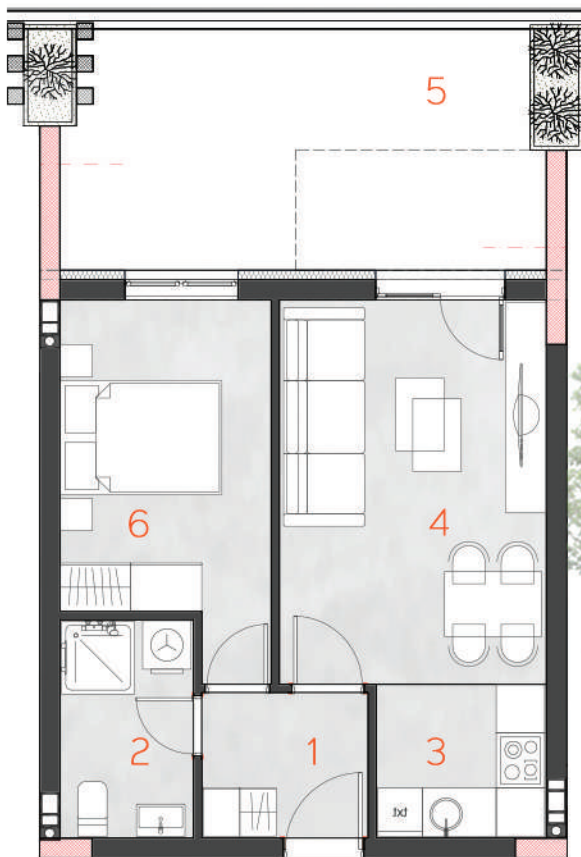






positioning in the building  
 položaj stana u objektu

1 2 3 4 5 6 7 G LAMELA 1



▲  
 ulaz  
 entrance



apartment number

**STAN 6**

br.	prostorija	P (m <sup>2</sup> )	P*k (m <sup>2</sup> )	obrada poda
1	Hodnik	3.70	3.70	Keramika
2	Kupatilo	4.46	4.46	Keramika
3	Kuhinja	3.99	3.99	Keramika
4	Dnevni boravak	15.67	15.67	Parket
5	Lođa	17.37	13.03	Keramika
6	Soba	10.82	10.82	Parket
UKUPNO:		56.01	51.67	





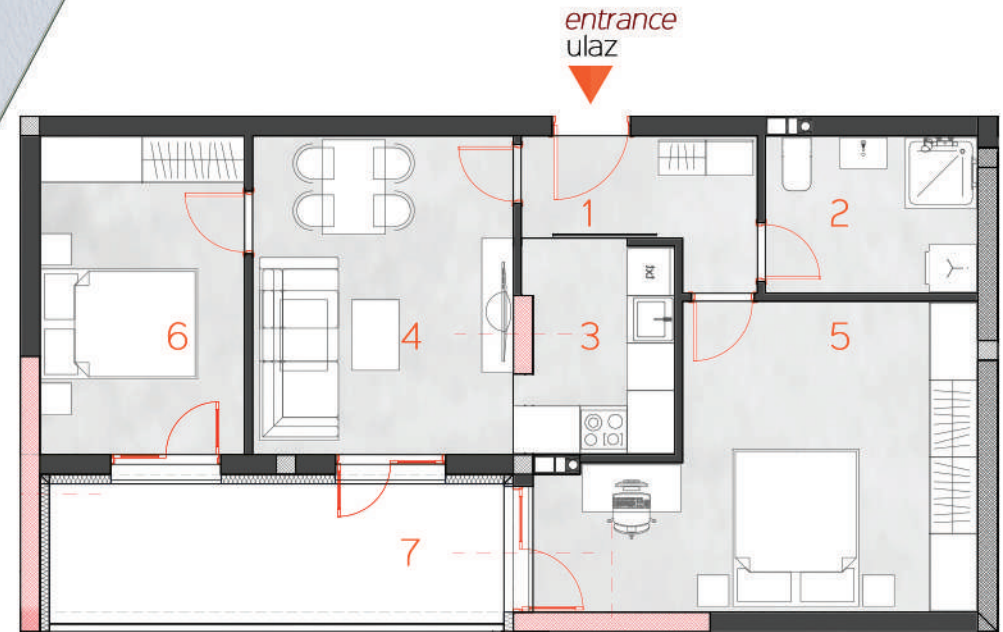


positioning in the building  
 položaj stana u objektu  
 1 2 3 4 5 6 7 G LAMELA 1

apartment number

STAN 8 / 16 / 24 / 32 / 40 / 48

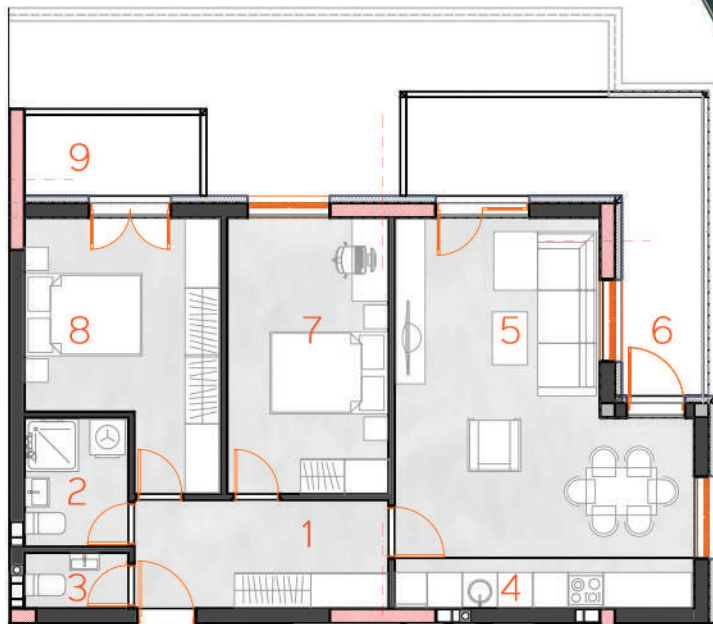
br.	prostoriya	P (m <sup>2</sup> )	P*k (m <sup>2</sup> )	obrada poda
1	Hodnik	4.69	4.69	Keramika
2	Kupatilo	5.40	5.40	Keramika
3	Kuhinja	5.25	5.25	Keramika
4	Dnevni boravak	13.41	13.41	Parquet
5	Soba	18.33	18.33	Parquet
6	Soba	10.53	10.53	Parquet
7	Lođa	10.27	7.70	Keramika
UKUPNO:		67.88	65.31	







positioning in the building  
 položaj stana u objektu  
 1 2 3 4 5 6 7 G LAMELA 1



▲ ulaz entrance

apartment number

STAN 11 / 19 / 27 / 35 / 43

br.	prostorija	P (m <sup>2</sup> )	P*k (m <sup>2</sup> )	obrada poda
1	Hodnik	8.01	8.01	Keramika
2	Kupatilo	3.89	3.89	Keramika
3	Toalet	1.68	1.68	Keramika
4	Kuhinja	4.42	4.42	Keramika
5	Dnevni boravak	24.05	24.05	Parquet
6	Loda	13.18	9.89	Keramika
7	Soba	12.91	12.91	Parquet
8	Soba	13.14	13.14	Parquet
9	Loda	4.14	3.11	Keramika
UKUPNO:		85.42	81.10	







positioning in the building  
 položaj stana u objektu  
 1 2 3 4 5 6 7 G LAMELA 1



▲ ulaz entrance

apartment number

STAN 12 / 20 / 28 / 36 / 44

br.	prostorija	P (m <sup>2</sup> )	P*k (m <sup>2</sup> )	obrada poda
1	Hodnik	6.36	6.36	Keramika
2	Kupatilo	4.57	4.57	Keramika
3	Kuhinja	4.90	4.90	Keramika
4	Dnevni boravak	17.63	17.63	Parquet
5	Loda	4.14	3.11	Keramika
6	Soba	9.37	9.37	Parquet
7	Soba	13.57	13.57	Parquet
UKUPNO:		60.54	59.51	







positioning in the building  
 položaj stana u objektu  
 1 2 3 4 5 6 7 G LAMELA 1



▲ ulaz entrance

apartment number

STAN 13 / 21 / 29 / 37 / 45

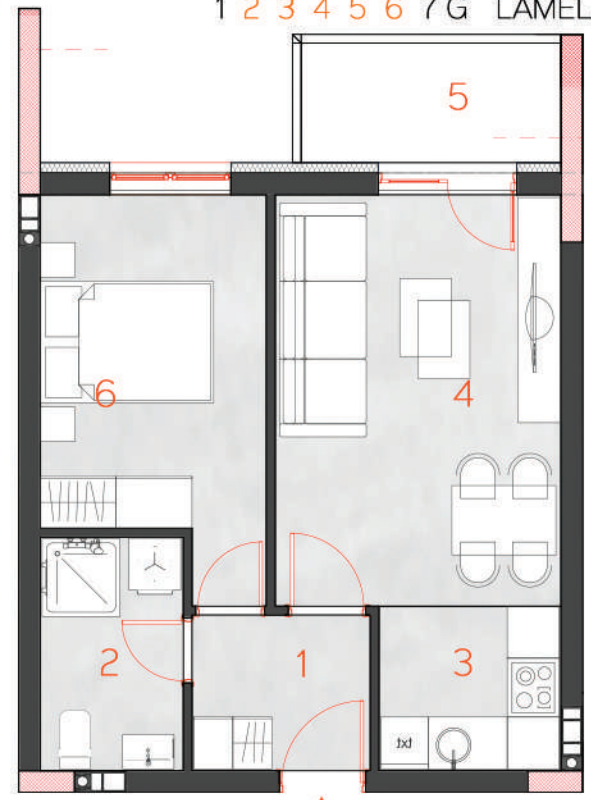
br.	prostorija	P (m <sup>2</sup> )	P*k (m <sup>2</sup> )	obrada poda
1	Hodnik	6.36	6.36	Keramika
2	Kupatilo	4.57	4.57	Keramika
3	Kuhinja	4.90	4.90	Keramika
4	Dnevni boravak	17.63	17.63	Parquet
5	Loda	4.14	3.11	Keramika
6	Soba	9.37	9.37	Parquet
7	Soba	13.57	13.57	Parquet
UKUPNO:		60.54	59.51	







positioning in the building  
 položaj stana u objektu  
 1 2 3 4 5 6 7 G LAMELA 1



▲ ulaz entrance



apartment number

STAN 14 / 22 / 30 / 38 / 46

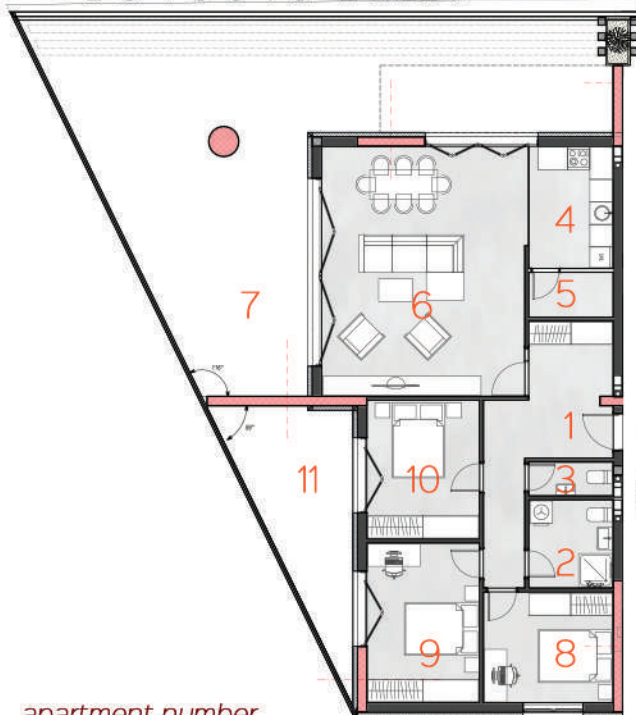
br.	prostorija	P (m <sup>2</sup> )	P*k (m <sup>2</sup> )	obrada poda
1	Hodnik	3.70	3.70	Keramika
2	Kupatilo	4.46	4.46	Keramika
3	Kuhinja	3.99	3.99	Keramika
4	Dnevni boravak	15.67	15.67	Parket
5	Lođa	4.14	3.11	Keramika
6	Soba	10.82	10.82	Parket
UKUPNO:		42.78	41.75	





positioning in the building  
 položaj stana u objektu

1 2 3 4 5 6 7 G LAMELA 1



ulaz  
 entrance

apartment number

STAN 7

br.	prostorija	P (m <sup>2</sup> )	P*k (m <sup>2</sup> )	obrada poda
1	Hodnik	13.78	13.78	Keramika
2	Kupatilo	5.29	5.29	Keramika
3	Toalet	2.03	2.03	Keramika
4	Kuhinja	7.31	7.31	Keramika
5	Ostava	2.70	2.70	Keramika
6	Dnevni boravak	36.24	36.24	Parket
7	Lođa	76.07	57.05	Keramika
8	Soba	10.18	10.18	Parket
9	Soba	12.75	12.75	Parket
10	Soba	11.10	11.10	Parket
11	Lođa	15.47	11.60	Keramika
UKUPNO:		192.92	170.03	







positioning in the building  
 položaj stana u objektu  
 1 2 3 4 5 6 7 G LAMELA 1



ulaz entrance



apartment number

STAN 15

br.	prostorija	P (m <sup>2</sup> )	P*k (m <sup>2</sup> )	obrada poda
1	Hodnik	13.78	13.78	Keramika
2	Kupatilo	5.29	5.29	Keramika
3	Toalet	2.03	2.03	Keramika
4	Kuhinja	7.31	7.31	Keramika
5	Ostava	2.70	2.70	Keramika
6	Dnevni boravak	36.24	36.24	Parket
7	Loda	56.17	42.13	Keramika
8	Soba	10.18	10.18	Parket
9	Soba	12.75	12.75	Parket
10	Soba	11.10	11.10	Parket
11	Loda	15.47	11.60	Keramika
UKUPNO:		173.02	155.11	



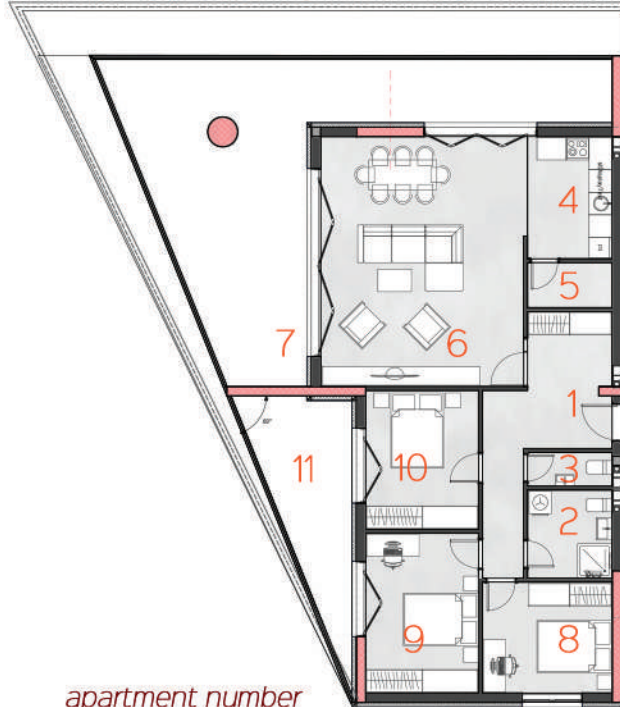




positioning in the building

položaj stana u objektu

1 2 3 4 5 6 7 G LAMELA 1



apartment number

STAN 23

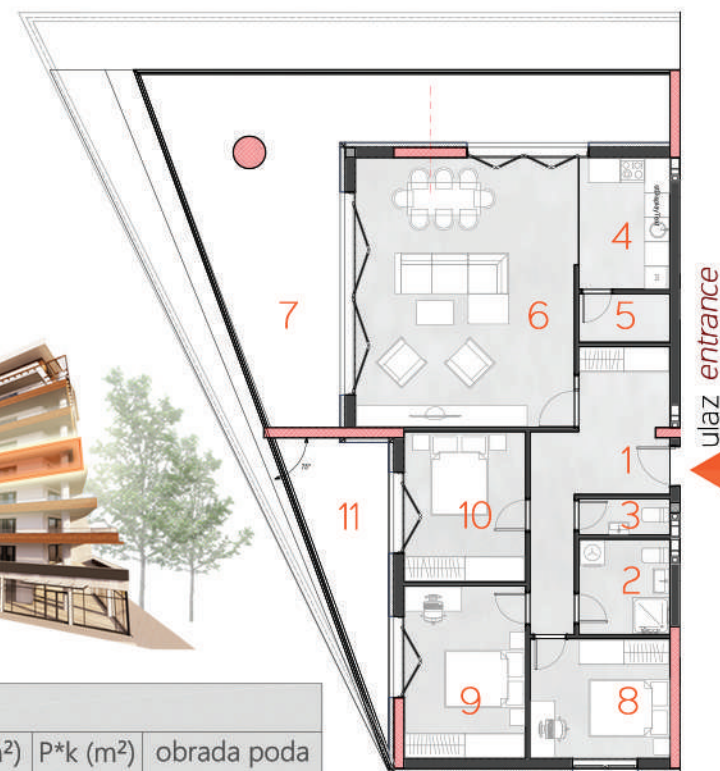
br.	prostorija	P (m <sup>2</sup> )	P*k (m <sup>2</sup> )	obrada poda
1	Hodnik	13.78	13.78	Keramika
2	Kupatilo	5.29	5.29	Keramika
3	Toalet	2.03	2.03	Keramika
4	Kuhinja	7.31	7.31	Keramika
5	Ostava	2.70	2.70	Keramika
6	Dnevni boravak	36.24	36.24	Parket
7	Loda	46.83	35.12	Keramika
8	Soba	10.18	10.18	Parket
9	Soba	12.75	12.75	Parket
10	Soba	11.10	11.10	Parket
11	Loda	12.65	9.49	Keramika
UKUPNO:		160.86	145.99	







positioning in the building  
 položaj stana u objektu  
 1 2 3 4 5 6 7 G LAMELA 1



apartment number

**STAN 31**

br.	prostorija	P (m <sup>2</sup> )	P*k (m <sup>2</sup> )	obrada poda
1	Hodnik	13.78	13.78	Keramika
2	Kupatilo	5.29	5.29	Keramika
3	Toalet	2.03	2.03	Keramika
4	Kuhinja	7.31	7.31	Keramika
5	Ostava	2.70	2.70	Keramika
6	Dnevni boravak	36.24	36.24	Parket
7	Loda	42.07	31.55	Keramika
8	Soba	10.18	10.18	Parket
9	Soba	12.75	12.75	Parket
10	Soba	11.10	11.10	Parket
11	Loda	10.75	8.06	Keramika
UKUPNO:		154.20	140.99	



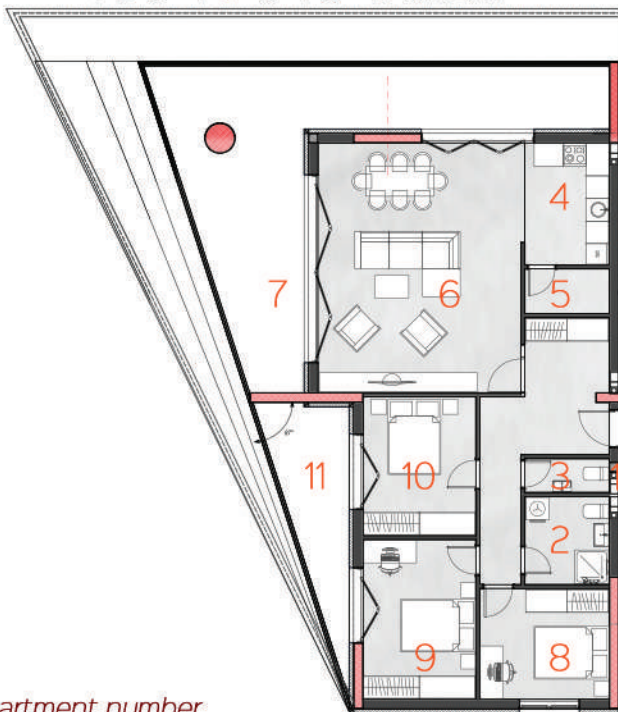




positioning in the building

položaj stana u objektu

1 2 3 4 5 6 7 G LAMELA 1



ulaz  
entrance

apartment number

STAN 39

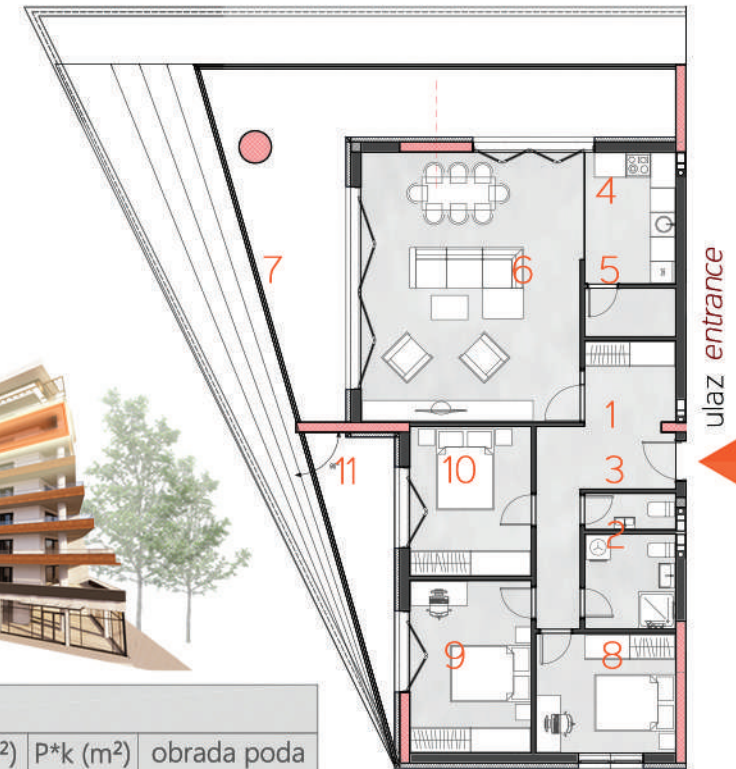
br.	prostorija	P (m <sup>2</sup> )	P*k (m <sup>2</sup> )	obrada poda
1	Hodnik	13.78	13.78	Keramika
2	Kupatilo	5.29	5.29	Keramika
3	Toalet	2.03	2.03	Keramika
4	Kuhinja	7.31	7.31	Keramika
5	Ostava	2.70	2.70	Keramika
6	Dnevni boravak	36.24	36.24	Parket
7	Loda	38.00	28.50	Keramika
8	Soba	10.18	10.18	Parket
9	Soba	12.75	12.75	Parket
10	Soba	11.10	11.10	Parket
11	Loda	9.95	7.46	Keramika
UKUPNO:		149.33	137.34	







positioning in the building  
 položaj stana u objektu  
 1 2 3 4 5 6 7 G LAMELA 1



apartment number

**STAN 47**

br.	prostorija	P (m <sup>2</sup> )	P*k (m <sup>2</sup> )	obrada poda
1	Hodnik	13.78	13.78	Keramika
2	Kupatilo	5.29	5.29	Keramika
3	Toalet	2.03	2.03	Keramika
4	Kuhinja	7.31	7.31	Keramika
5	Ostava	2.70	2.70	Keramika
6	Dnevni boravak	36.24	36.24	Parket
7	Lođa	33.72	25.31	Keramika
8	Soba	10.18	10.18	Parket
9	Soba	12.75	12.75	Parket
10	Soba	11.10	11.10	Parket
11	Lođa	8.65	6.49	Keramika
UKUPNO:		143.75	133.18	



# LAMELA 1

SECTION 1

stanovi na dvije etaže - duplexi  
*two floor apartments - duplex apartments*

## lokacija

objekat se nalazi u  
širem centru grada,  
u Ulici Kneza Miloša,  
okružen prirodom i svjetlošću.

## location

*positioned in the wider  
city center area,  
surrounded by nature and light*







positioning in the building  
 položaj stana u objektu  
 1 2 3 4 5 6 7 G LAMELA 1

▼ ulaz entrance



7

apartment number

STAN 50

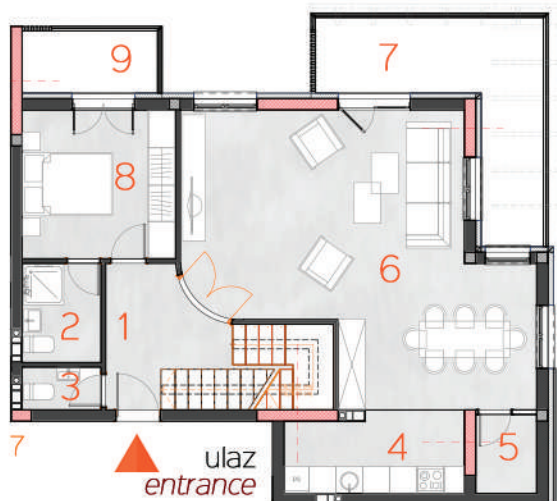
br.	prostorija	P (m <sup>2</sup> )	P*k (m <sup>2</sup> )	obrada poda
1	Hodnik	4.56	4.56	Keramika
2	Toalet	1.50	1.13	Keramika
3	Kuhinja	7.38	7.38	Keramika
4	Lođa	3.62	2.72	Keramika
5	Dnevni boravak	26.69	26.69	Parket
6	Stepenice	4.78	4.78	Parket
7	Hodnik	7.92	7.92	Keramika
8	Kupatilo	6.92	6.92	Keramika
9	Soba	10.11	10.11	Parket
10	Soba	12.75	12.75	Parket
11	Soba	7.29	7.29	Parket
12	Loda	3.62	2.72	Keramika
UKUPNO:		97.14	94.97	







positioning in the building  
 položaj stana u objektu  
 1 2 3 4 5 6 7G LAMELA 1

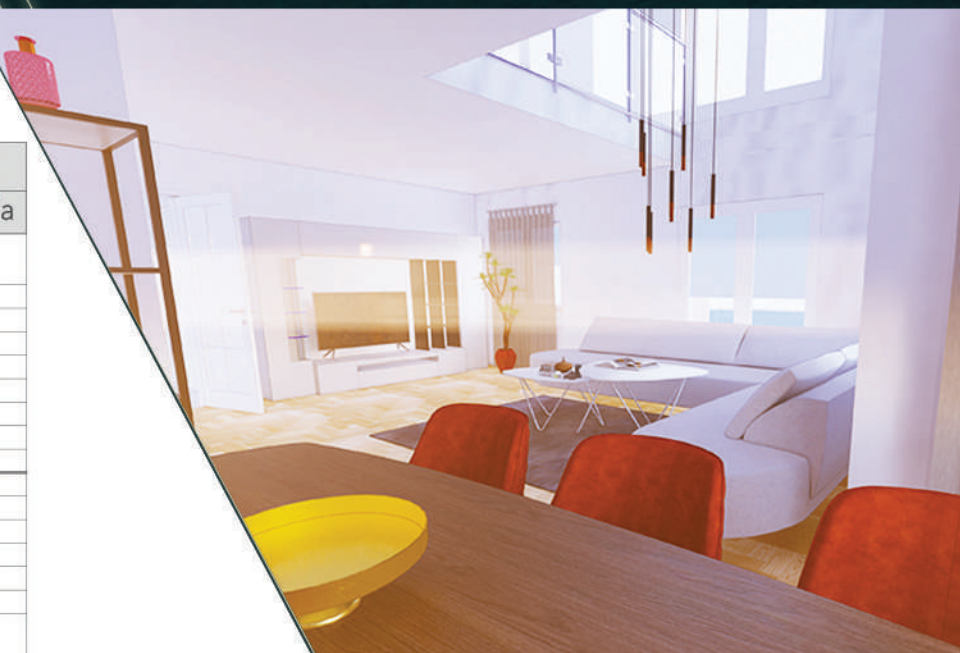


G

apartment number

### STAN 51

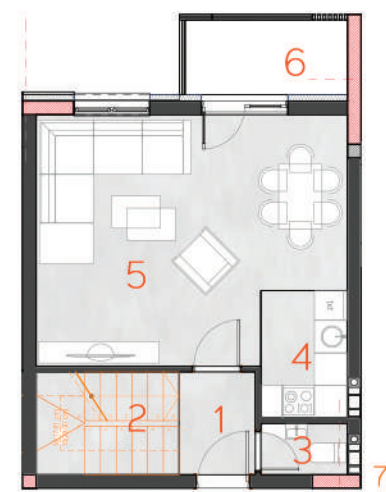
br.	prostorija	P (m <sup>2</sup> )	P*k (m <sup>2</sup> )	obrada poda
1	Hodnik sa stepeništem	12.12	12.12	Keramika
2	Kupatilo	3.85	3.85	Keramika
3	Toalet	1.66	1.66	Keramika
4	Kuhinja	6.96	6.96	Keramika
5	Ostava	2.36	2.36	Keramika
6	Dnevni boravak	39.69	39.69	Parket
7	Lođa	13.18	9.89	Keramika
8	Soba	11.23	11.23	Parket
9	Lođa	4.14	3.11	Keramika
10	Hodnik	10.92	10.92	Keramika
11	Kupatilo	7.01	7.01	Keramika
12	Soba	21.66	21.66	Parket
13	Soba	11.98	11.98	Parket
14	Soba	14.79	14.79	Parket
16	Lođa	14.00	10.50	Keramika
UKUPNO:		175.55	167.73	



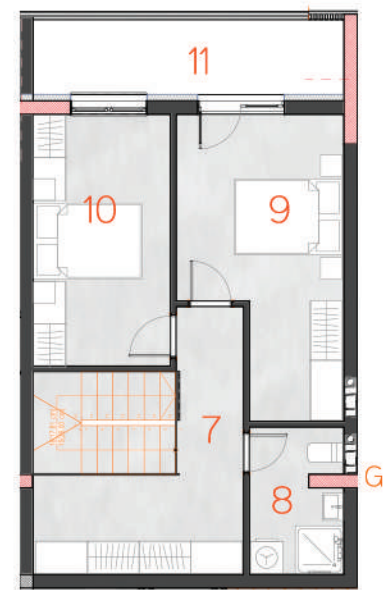




positioning in the building  
 položaj stana u objektu  
 1 2 3 4 5 6 7 G LAMELA 1



ulaz  
 entrance



apartment number

STAN 52

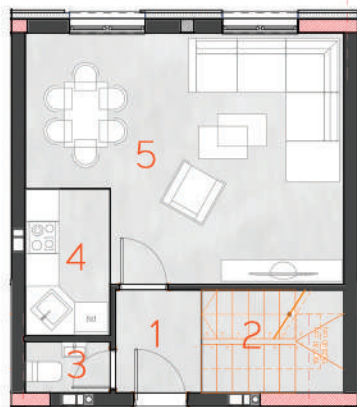
br.	prostorija	P (m <sup>2</sup> )	P*k (m <sup>2</sup> )	obrada poda
1	Hodnik	2.68	2.68	Keramika
2	Stepenice	5.02	5.02	Parket
3	Toalet	1.52	1.52	Keramika
4	Kuhinja	3.74	3.74	Keramika
5	Dnevni boravak	24.50	24.50	Parket
6	Loda	4.14	3.11	Keramika
7	Hodnik	11.08	11.08	Keramika
8	Kupatilo	4.61	4.61	Keramika
9	Soba	14.58	14.58	Parket
10	Soba	11.81	11.81	Parket
11	Loda	7.95	5.96	Keramika
UKUPNO:		91.63	88.61	





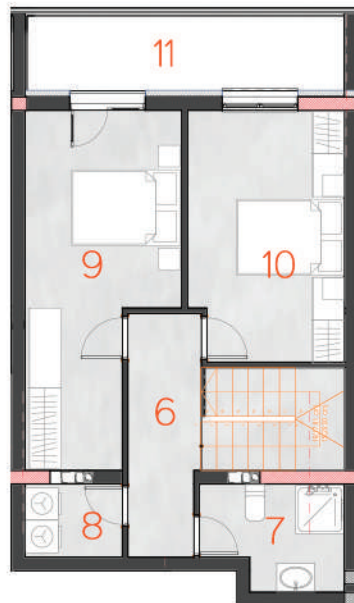


positioning in the building  
 položaj stana u objektu  
 1 2 3 4 5 6 7 G LAMELA 1



7

▲ ulaz  
 entrance



G

apartment number

STAN 53

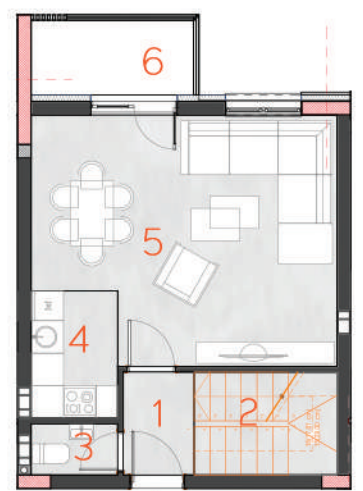
br.	prostorija	P (m <sup>2</sup> )	P*k (m <sup>2</sup> )	obrada poda
1	Hodnik	3.03	3.03	Keramika
2	Stepenice	5.02	5.02	Parket
3	Toalet	1.49	1.49	Keramika
4	Kuhinja	3.72	3.72	Keramika
5	Dnevni boravak	25.15	25.15	Parket
6	Hodnik	5.91	5.91	Keramika
7	Kupatilo	4.76	4.76	Keramika
8	Vešeraj	2.43	2.43	Keramika
9	Soba	16.00	16.00	Parket
10	Soba	13.14	13.14	Parket
11	Loda	8.11	6.08	Keramika
UKUPNO:		88.76	86.73	



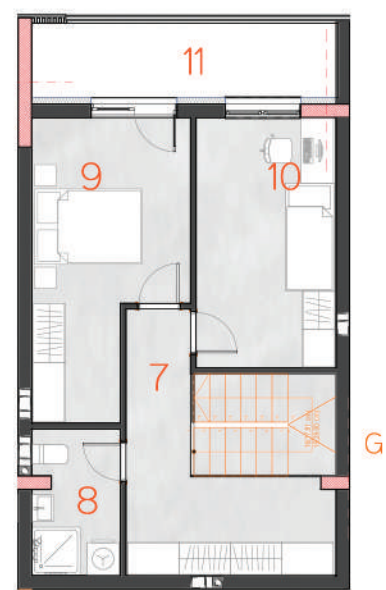




positioning in the building  
 položaj stana u objektu  
 1 2 3 4 5 6 7 G LAMELA 1



▲ ulaz  
 entrance



apartment number

**STAN 54**

br.	prostorija	P (m <sup>2</sup> )	P*k (m <sup>2</sup> )	obrada poda
1	Hodnik	2.49	2.49	Keramika
2	Stepenice	5.02	5.02	Parket
3	Toalet	1.52	1.52	Keramika
4	Kuhinja	3.76	3.76	Keramika
5	Dnevni boravak	24.03	24.03	Parket
6	Loda	4.14	3.11	Keramika
7	Hodnik	10.94	10.94	Keramika
8	Kupatilo	4.41	4.41	Keramika
9	Soba	13.84	13.84	Parket
10	Soba	12.09	12.09	Parket
11	Loda	7.88	5.91	Keramika
UKUPNO:		90.12	87.12	

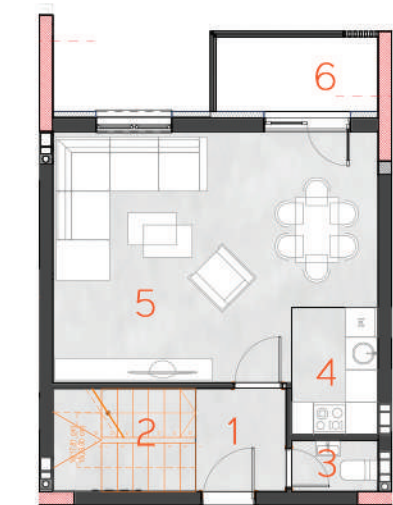




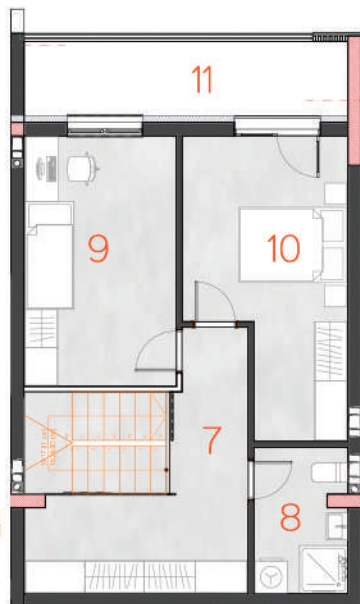
positioning in the building

položaj stana u objektu

1 2 3 4 5 6 7G LAMELA 1



7 ▲ ulaz  
entrance



G

apartment number

STAN 55

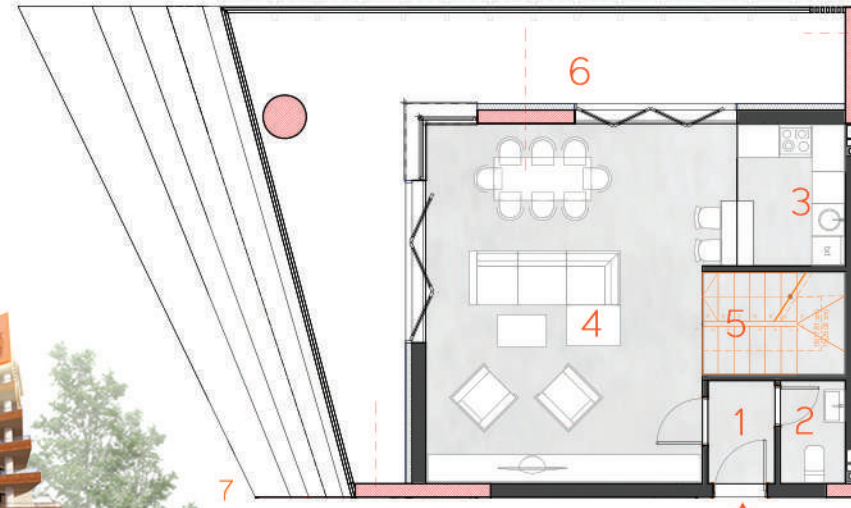
br.	prostorija	P (m <sup>2</sup> )	P*k (m <sup>2</sup> )	obrada poda
1	Hodnik	3.20	3.20	Keramika
2	Stepenice	5.05	5.05	Parquet
3	Toalet	1.52	1.52	Keramika
4	Kuhinja	3.76	3.76	Keramika
5	Dnevni boravak	25.65	25.65	Parquet
6	Loda	4.14	3.11	Keramika
7	Hodnik	11.85	11.85	Keramika
8	Kupatilo	4.67	4.67	Keramika
9	Soba	13.16	13.16	Parquet
10	Soba	14.52	14.52	Parquet
11	Loda	8.32	6.24	Keramika
UKUPNO:		95.84	92.73	







positioning in the building  
 položaj stana u objektu  
 1 2 3 4 5 6 7G LAMELA 1



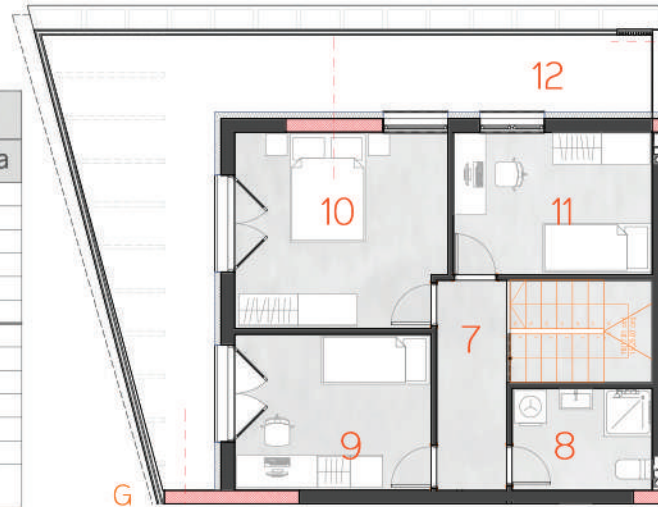
entrance ulaz ▲



apartment number

**STAN 56**

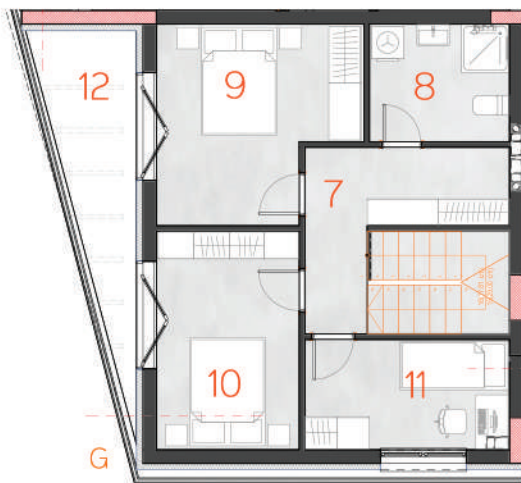
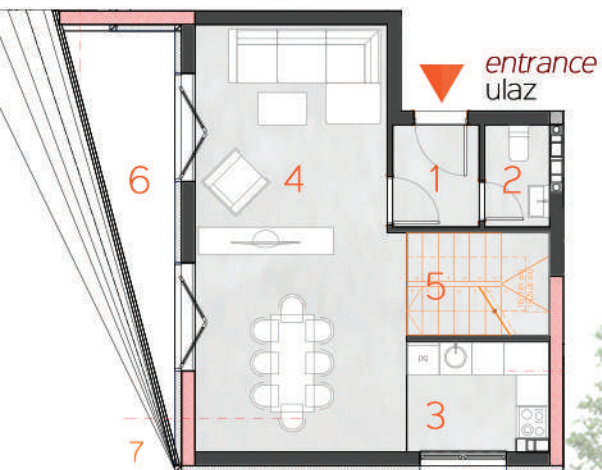
br.	prostorija	P (m <sup>2</sup> )	P*k (m <sup>2</sup> )	obrada poda
1	Hodnik	2.37	2.37	Keramika
2	Toalet	2.30	2.30	Keramika
3	Kuhinja	5.26	5.26	Keramika
4	Dnevni boravak	35.66	35.66	Parquet
5	Stepenice	5.04	5.04	Parquet
6	Loda	31.63	23.72	Keramika
7	Hodnik	5.07	5.07	Keramika
8	Kupatilo	4.94	4.94	Keramika
9	Soba	10.57	10.57	Parquet
10	Soba	14.14	14.14	Parquet
11	Soba	9.78	9.78	Parquet
12	Loda	29.31	21.98	Keramika
UKUPNO:		156.07	140.83	







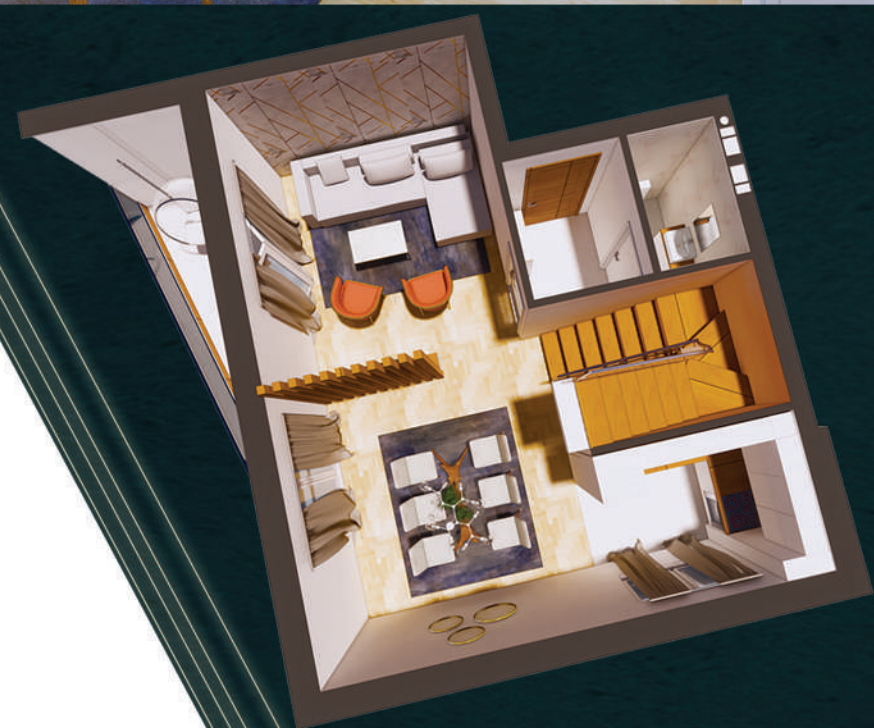
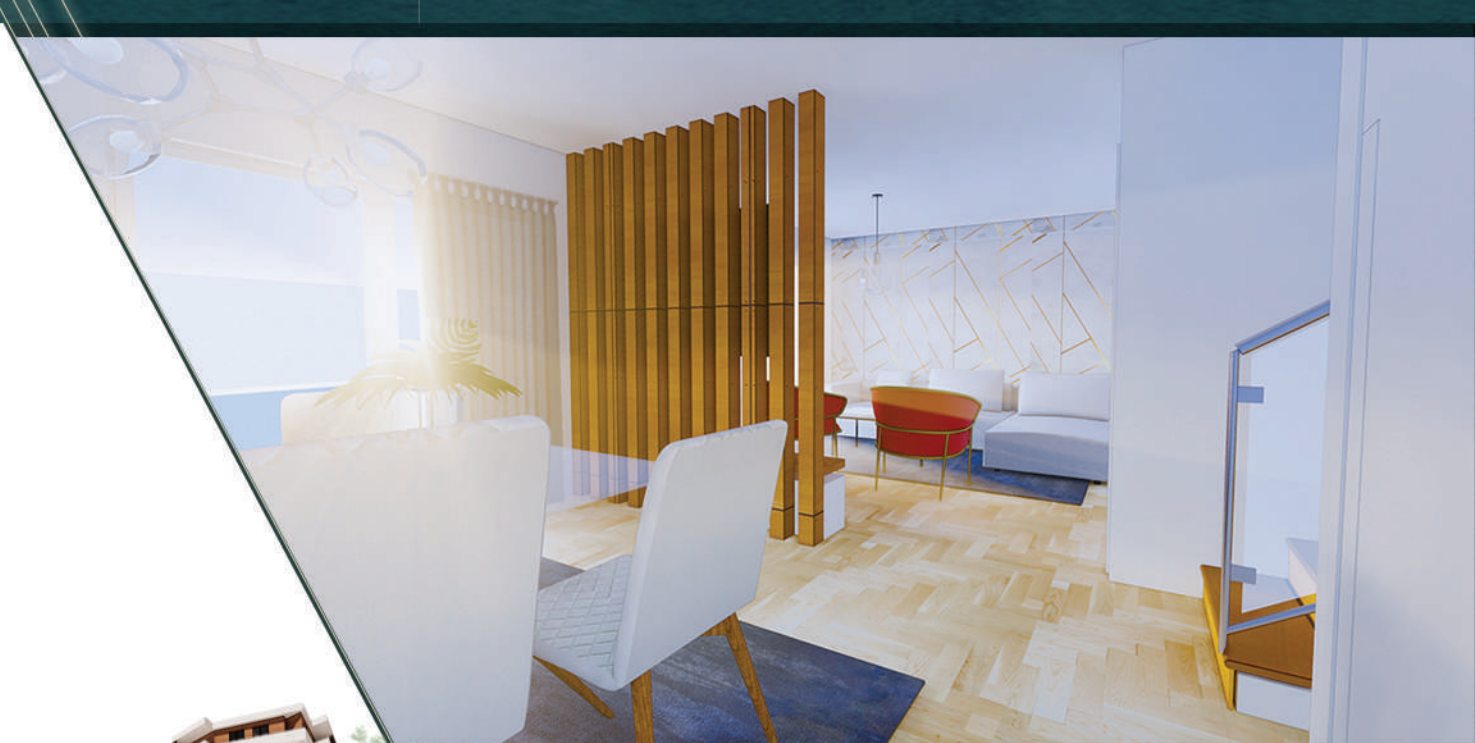
positioning in the building  
 položaj stana u objektu  
 1 2 3 4 5 6 7 G LAMELA 1



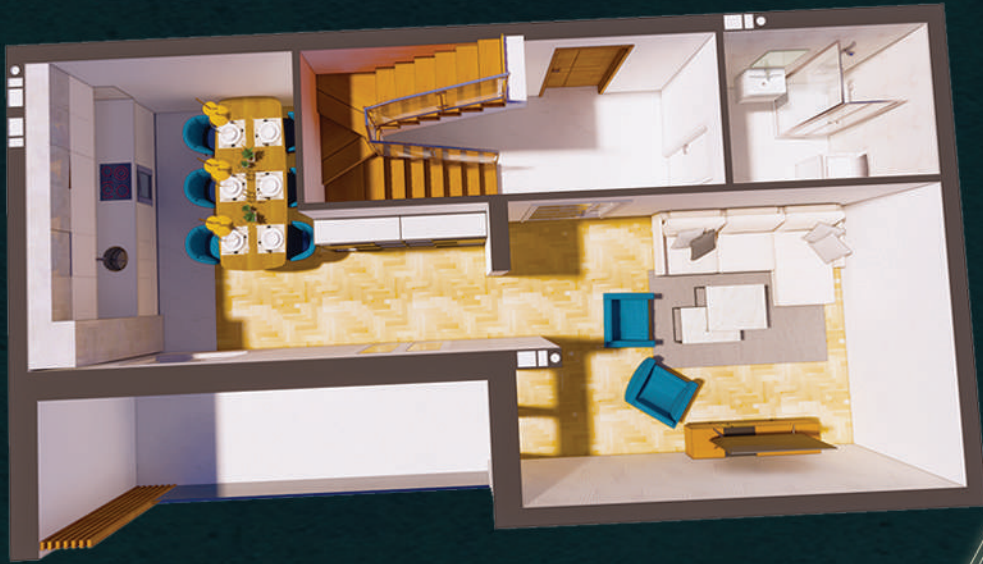
apartment number

STAN 57

br.	prostorija	P (m <sup>2</sup> )	P*k (m <sup>2</sup> )	obrada poda
1	Hodnik	3.02	3.02	Keramika
2	Toalet	2.27	2.27	Keramika
3	Kuhinja	5.37	5.37	Keramika
4	Dnevni boravak	29.51	29.51	Parket
5	Stepenice	5.04	5.04	Parket
6	Loda	7.92	5.94	Keramika
7	Hodnik	7.87	7.87	Keramika
8	Kupatilo	5.68	5.68	Keramika
9	Soba	12.54	12.54	Parket
10	Soba	10.75	10.75	Parket
11	Soba	7.79	7.79	Parket
12	Loda	7.92	5.94	Keramika
UKUPNO:		105.68	101.72	







positioning in the building  
 položaj stana u objektu  
 1 2 3 4 5 6 7 G LAMELA 1

apartment number

STAN 58

br.	prostorija	P (m <sup>2</sup> )	P*k (m <sup>2</sup> )	obrada poda
1	Hodnik	5.77	5.77	Keramika
2	Stepenice	5.35	5.35	Parket
3	Kupatilo	5.47	5.47	Keramika
4	Kuhinja	6.08	6.08	Keramika
5	Dnevni boravak	35.26	35.26	Parket
6	Loda	10.27	7.70	Keramika
7	Hodnik	7.56	7.56	Keramika
8	Kupatilo	5.13	5.13	Keramika
9	Soba	20.35	20.35	Parket
10	Soba	19.20	19.20	Parket
11	Loda	10.27	7.70	Keramika
UKUPNO:		130.71	125.57	



ulaz  
 entrance







## lokacija

objekat se nalazi u širem centru grada, u Ulici Kneza Miloša, okružen prirodom i svjetlošću.

## location

*positioned in the wider city center area, surrounded by nature and light*

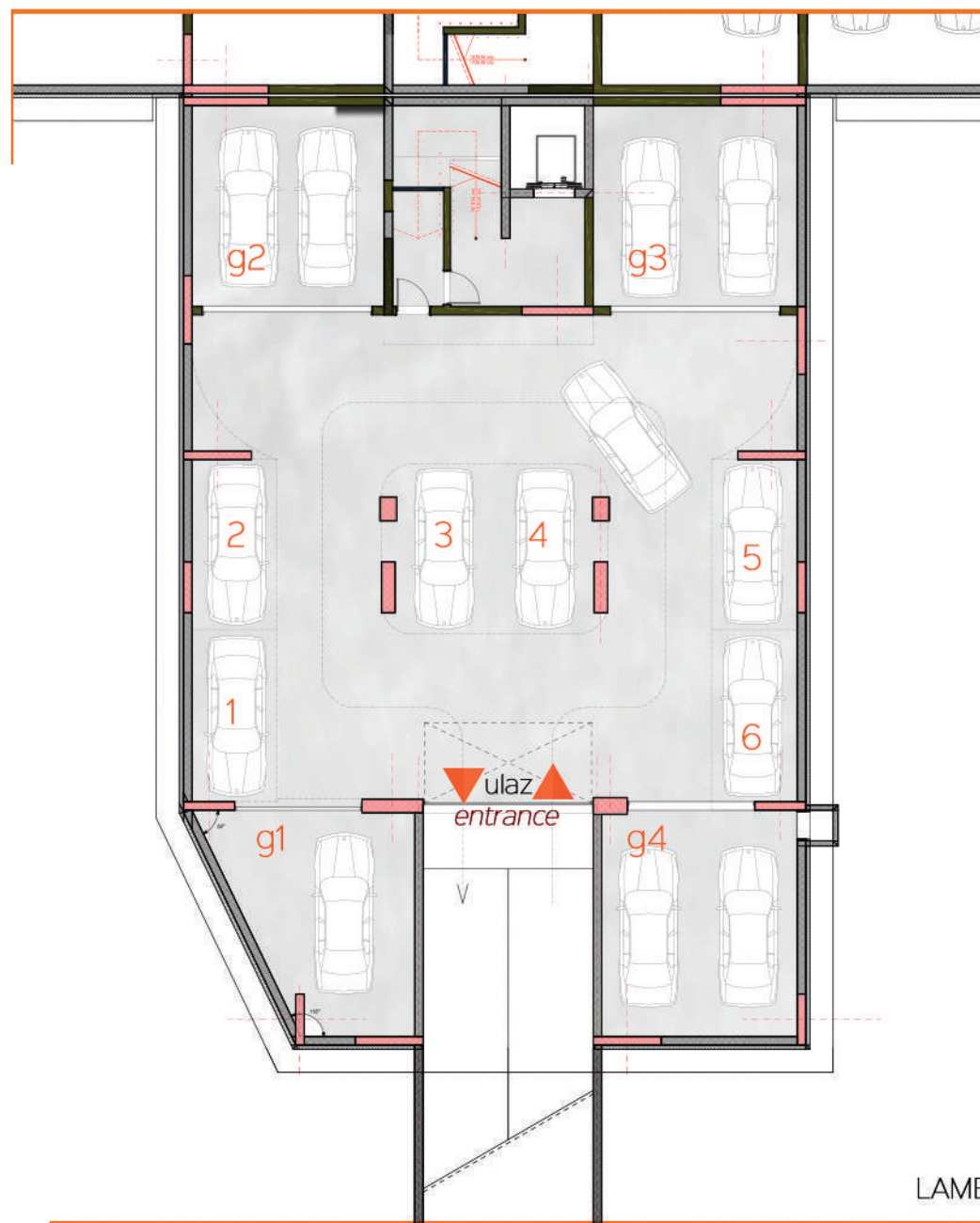
# LAMELA 2

## SECTION 2





podrum  
podzemna garaža  
underground garage



LAMELA 2



### GARAŽA BR. 1

1 parking mjesto ( 7 )

P - 32,49 m<sup>2</sup>

### GARAŽA BR. 2

2 parking mjesta ( 8 i 9 )

P - 33,33 m<sup>2</sup>

### GARAŽA BR. 3

2 parking mjesta ( 10 i 11 )

P - 35,40 m<sup>2</sup>

### GARAŽA BR. 4

2 parking mjesta ( 12 i 13 )

P - 38,14 m<sup>2</sup>

### ZAJEDNIČKA GARAŽA

6 parking mjesta



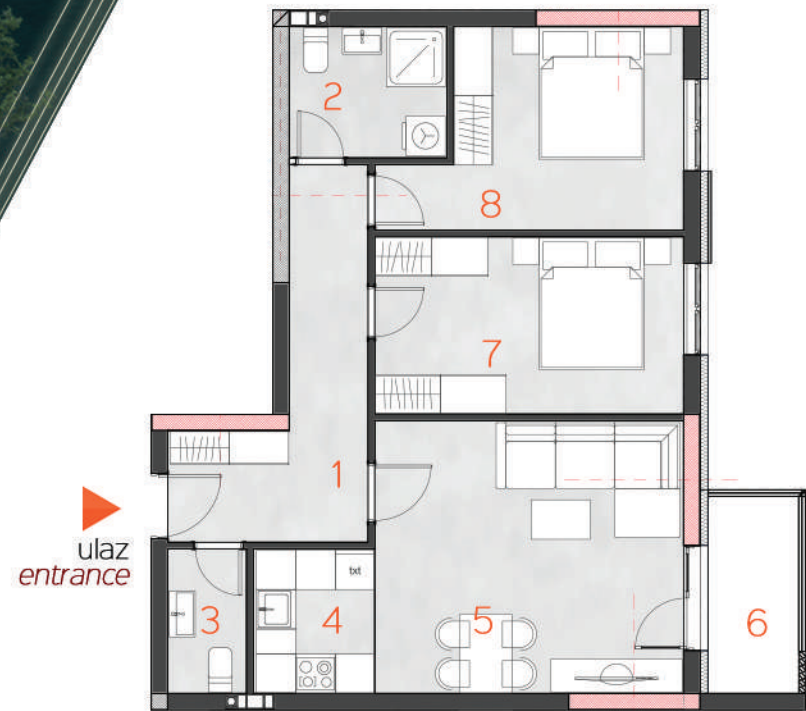
podrum  
popis garaža i garažnih mjesta

*parking space numerology*





positioning in the building  
 položaj stana u objektu  
 1 2 3 4 5 6 7 G LAMELA 2



apartment number

STAN 1 / 9 / 17 / 25 / 33 / 41

br.	prostorija	P (m <sup>2</sup> )	P*k (m <sup>2</sup> )	obrada poda
1	Hodnik	10.04	10.04	Keramika
2	Kupatilo	4.80	4.80	Keramika
3	Toalet	2.64	2.64	Keramika
4	Kuhinja	4.07	4.07	Keramika
5	Dnevni boravak	19.51	19.51	Parquet
6	Loda	4.14	3.11	Keramika
7	Soba	12.69	12.69	Parquet
8	Soba	12.05	12.05	Parquet
UKUPNO:		69.94	68.91	





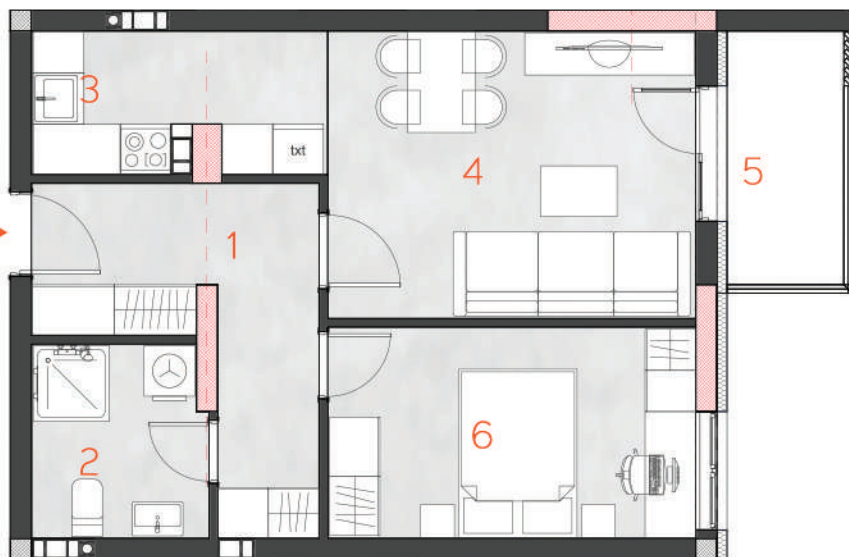
positioning in the building  
 položaj stana u objektu  
 1 2 3 4 5 6 7 G LAMELA 2



apartment number

STAN 2 / 10 / 18 / 26 / 34 / 42

br.	prostorija	P (m <sup>2</sup> )	P*k (m <sup>2</sup> )	obrada poda
1	Hodnik	8.85	8.85	Keramika
2	Kupatilo	4.71	4.71	Keramika
3	Kuhinja	5.59	5.59	Keramika
4	Dnevni boravak	14.79	14.79	Parquet
5	Lođa	4.14	3.11	Keramika
6	Soba	10.88	10.88	Parquet
UKUPNO:		48.96	47.93	





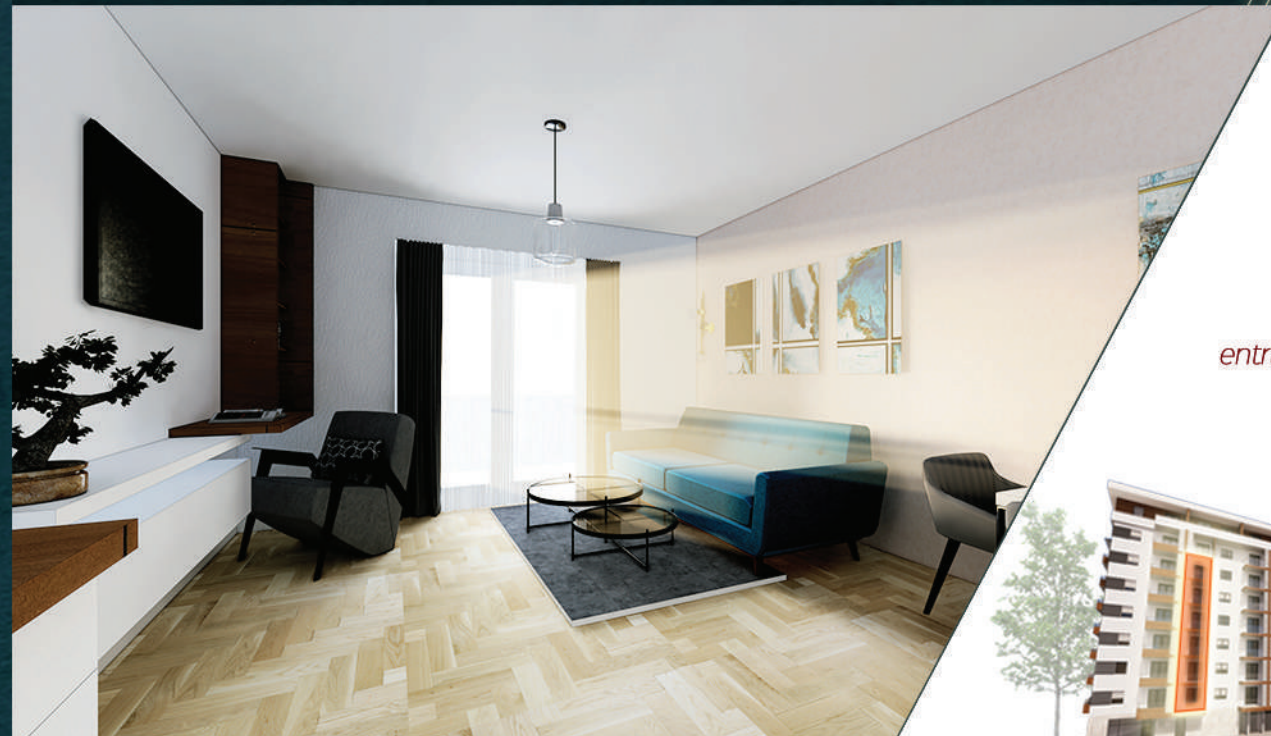


positioning in the building  
 položaj stana u objektu  
 1 2 3 4 5 6 7 G LAMELA 2

apartment number

STAN 3 / 11 / 19 / 27 / 35 / 43

br.	prostorija	P (m <sup>2</sup> )	P*k (m <sup>2</sup> )	obrada poda
1	Hodnik	3.78	3.78	Keramika
2	Kupatilo	3.99	3.99	Keramika
3	Kuhinja	4.37	4.37	Keramika
4	Dnevni boravak	17.04	17.04	Parket
5	Loda	4.14	3.11	Keramika
UKUPNO:		33.32	32.29	

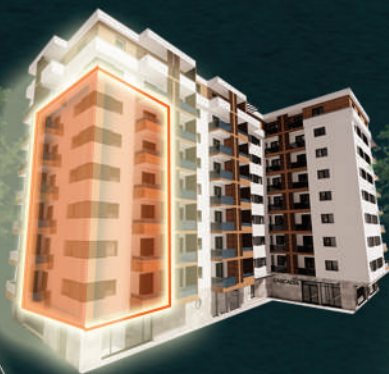






positioning in the building  
 položaj stana u objektu

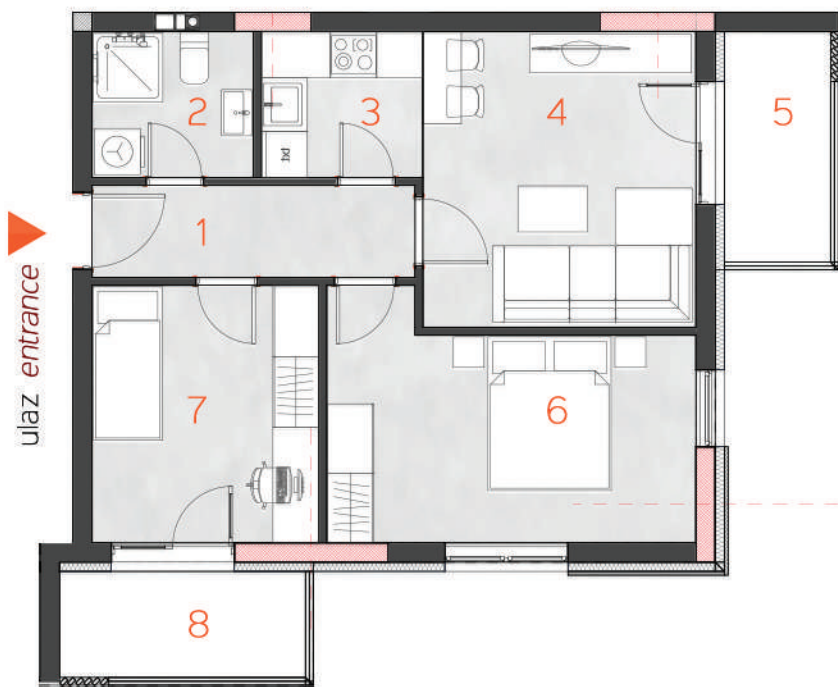
1 2 3 4 5 6 7 G LAMELA 2



apartment number

STAN 4 / 12 / 20 / 28 / 36 / 44

br.	prostorija	P (m <sup>2</sup> )	P*k (m <sup>2</sup> )	obrada poda
1	Hodnik	5.04	5.04	Keramika
2	Kupatilo	3.99	3.99	Keramika
3	Kuhinja	3.99	3.99	Keramika
4	Dnevni boravak	13.66	13.66	Parquet
5	Lođa	4.14	3.11	Keramika
6	Soba	13.71	13.71	Parquet
7	Soba	9.88	9.88	Parquet
8	Lođa	4.42	3.32	Keramika
UKUPNO:		58.83	56.70	





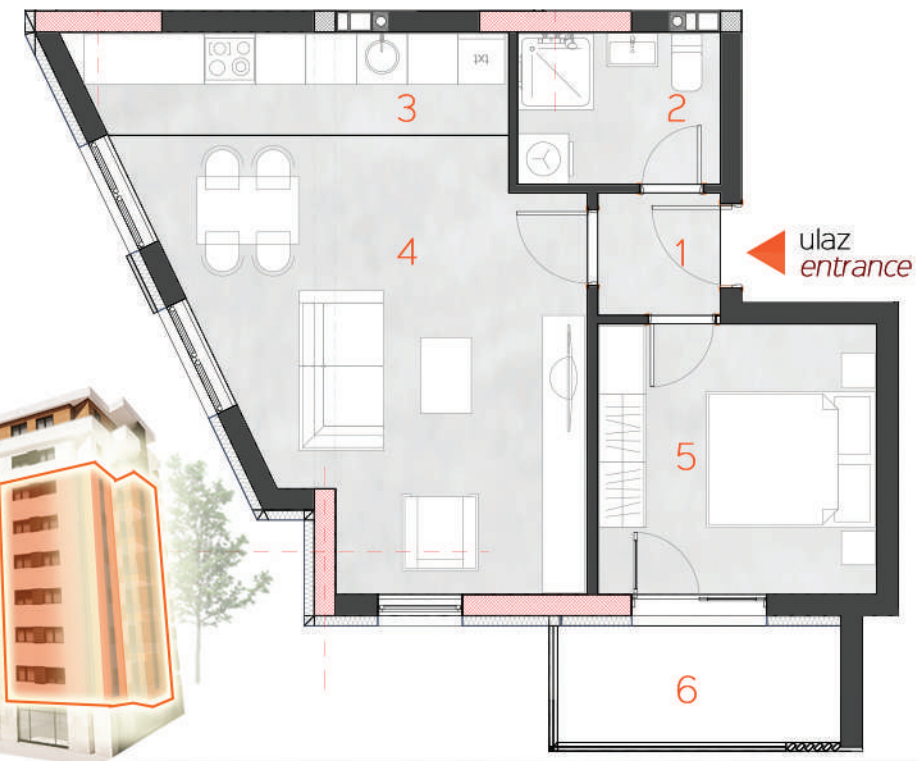


positioning in the building  
 položaj stana u objektu  
 1 2 3 4 5 6 7 G LAMELA 2

apartment number

STAN 5 / 13 / 21 / 29 / 37 / 45

br.	prostorija	P (m <sup>2</sup> )	P*k (m <sup>2</sup> )	obrada poda
1	Hodnik	2.10	2.10	Keramika
2	Kupatilo	4.32	4.32	Keramika
3	Kuhinja	6.14	6.14	Keramika
4	Dnevni boravak	22.61	22.61	Parquet
5	Soba	10.56	10.56	Parquet
6	Lođa	4.62	3.47	Keramika
UKUPNO:		50.35	49.20	







positioning in the building  
 položaj stana u objektu

1 2 3 4 5 6 7 G LAMELA 2

apartment number

STAN 6 / 14 / 22 / 30 / 38 / 46

br.	prostorija	P (m <sup>2</sup> )	P*k (m <sup>2</sup> )	obrada poda
1	Hodnik	3.78	3.78	Keramika
2	Kupatilo	3.99	3.99	Keramika
3	Kuhinja	4.37	4.37	Keramika
4	Dnevni boravak	17.01	17.01	Parket
5	Lođa	5.67	4.25	Keramika
UKUPNO:		34.82	33.40	



ulaz  
 entrance







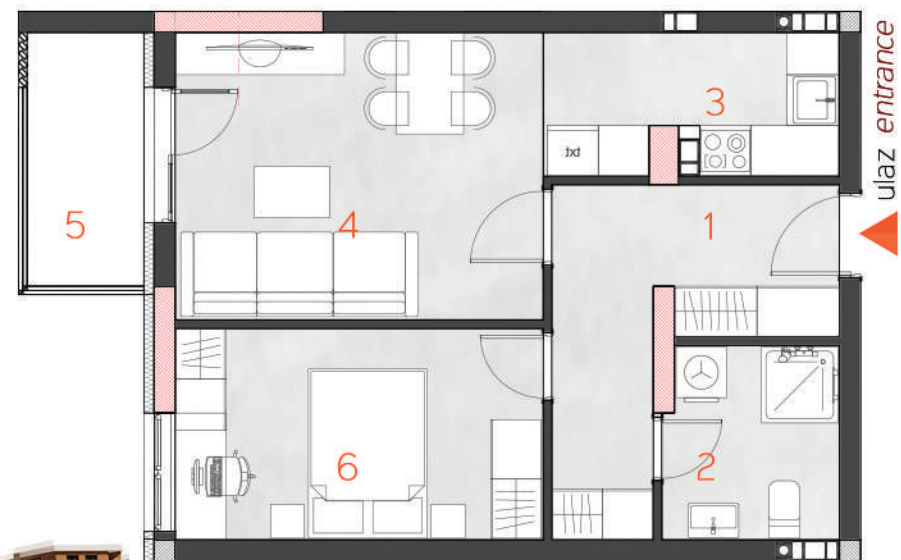
positioning in the building  
 položaj stana u objektu

1 2 3 4 5 6 7 G LAMELA 2

apartment number

STAN 7 / 15 / 23 / 31 / 39 / 47

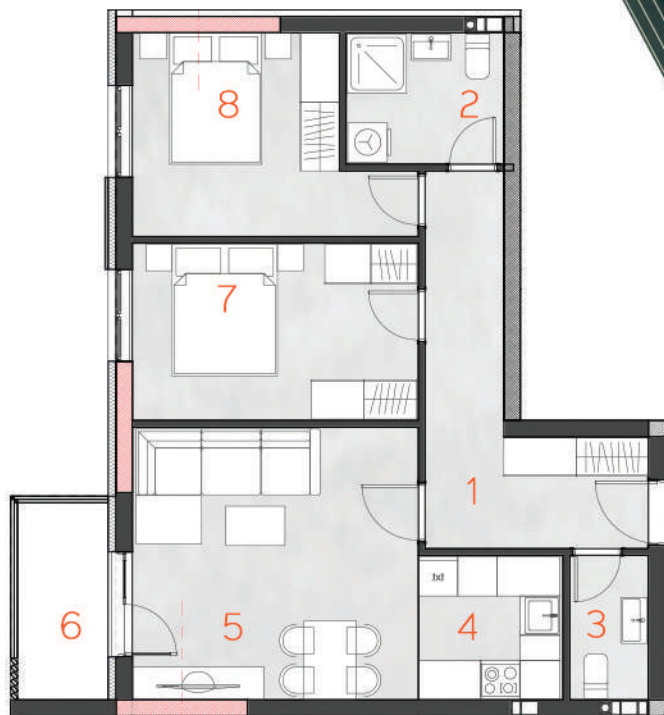
br.	prostorija	P (m <sup>2</sup> )	P*k (m <sup>2</sup> )	obrada poda
1	Hodnik	8.85	8.85	Keramika
2	Kupatilo	4.71	4.71	Keramika
3	Kuhinja	5.59	5.59	Keramika
4	Dnevni boravak	14.79	14.79	Parquet
5	Lođa	4.14	3.11	Keramika
6	Soba	10.88	10.88	Parquet
UKUPNO:		48.96	47.93	







positioning in the building  
 položaj stana u objektu  
 1 2 3 4 5 6 7 G LAMELA 2



apartment number

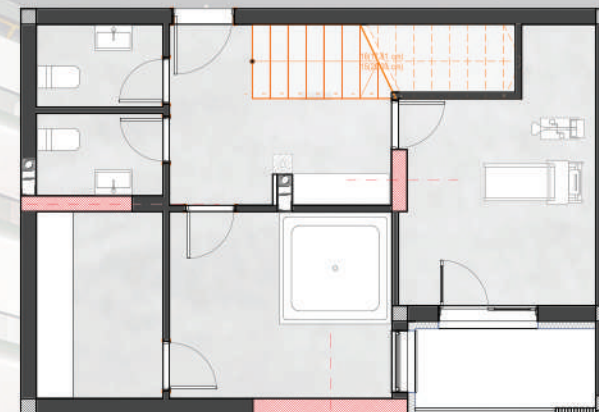
STAN 8 / 16 / 24 / 32 / 40 / 48

br.	prostorija	P (m <sup>2</sup> )	P*k (m <sup>2</sup> )	obrada poda
1	Hodnik	10.64	10.64	Keramika
2	Kupatilo	4.80	4.80	Keramika
3	Toalet	2.64	2.64	Keramika
4	Kuhinja	4.84	4.84	Keramika
5	Dnevni boravak	18.06	18.06	Parket
6	Loda	4.14	3.11	Keramika
7	Soba	11.74	11.74	Parket
8	Soba	10.97	10.97	Parket
UKUPNO:		67.83	66.80	





# CASCADIA



- zajednički prostor - sedmi sprat
- teretana
  - jacuzzi
  - sauna
  - toaleti



- zajednički prostor - galerija
- ostava
  - mini kuhinja
  - sala za slavlja i okupljanja
  - toaleti



# LAMELA 2

## SECTION 2

stanovi na dvije etaže - duplexi  
*two floor apartments - duplex apartments*

## lokacija

objekat se nalazi u  
širem centru grada,  
u Ulici Kneza Miloša,  
okružen prirodom i svjetlošću.

## location

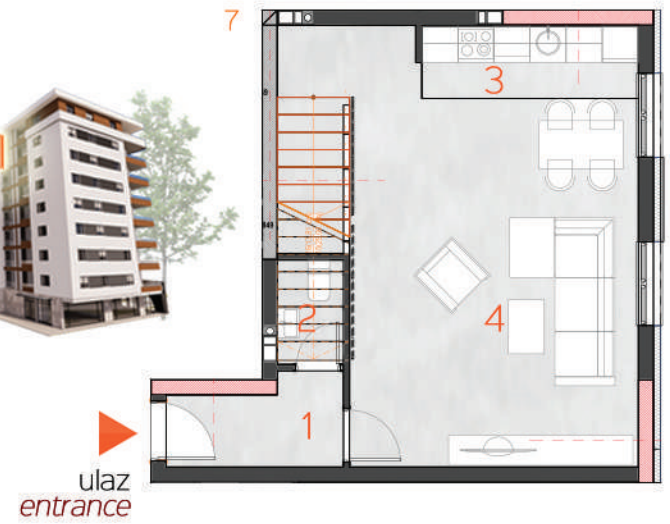
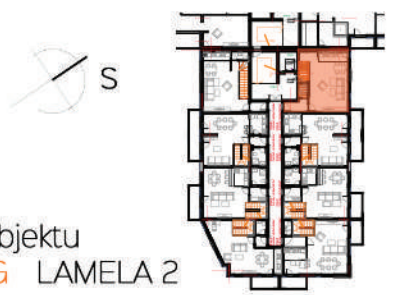
*positioned in the wider  
city center area,  
surrounded by nature and light*







positioning in the building  
 položaj stana u objektu  
 1 2 3 4 5 6 7 G LAMELA 2



apartment number  
**STAN 49**

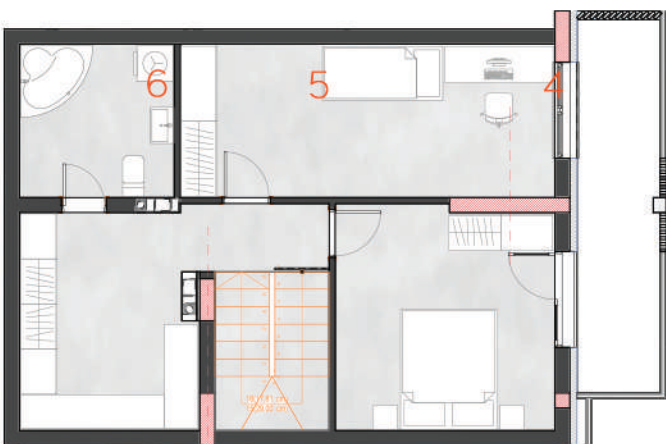
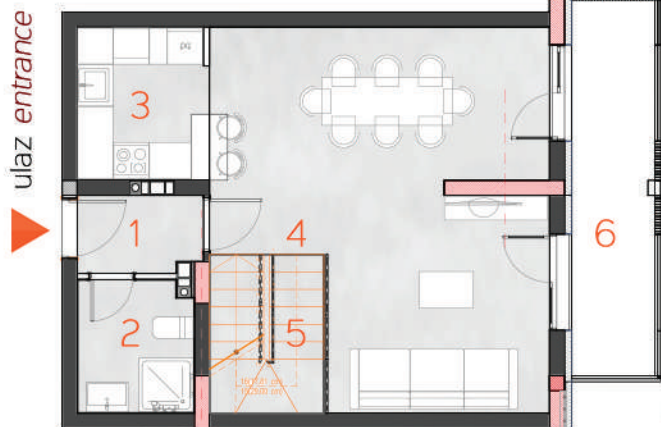
br.	prostorija	P (m <sup>2</sup> )	P*k (m <sup>2</sup> )	obrada poda
1	Hodnik	3.98	3.98	Keramika
2	Toalet	1.93	1.45	Keramika
3	Kuhinja	4.32	4.32	Keramika
4	Dnevni boravak	32.27	32.27	Parket
5	Stepenice	5.25	5.25	Parket
6	Hodnik	8.07	8.07	Keramika
7	Kupatilo	5.11	5.11	Keramika
8	Vešeraj	2.82	2.82	Keramika
9	Soba	10.53	10.53	Parket
11	Soba	13.64	13.64	Parket
12	Loda	4.62	3.47	Keramika
UKUPNO:		92.54	90.91	







positioning in the building  
 položaj stana u objektu  
 1 2 3 4 5 6 7 G LAMELA 2



apartment number

**STAN 50**

br.	prostorija	P (m <sup>2</sup> )	P*k (m <sup>2</sup> )	obrada poda
1	Hodnik	2.64	2.64	Keramika
2	Kupatilo	4.25	4.25	Keramika
3	Kuhinja	5.55	5.55	Keramika
4	Dnevni boravak	30.85	30.85	Parquet
5	Stepenice	5.02	5.02	Parquet
6	Loda	8.62	6.47	Keramika
7	Hodnik	13.12	13.12	Keramika
8	Kupatilo	6.57	6.57	Keramika
9	Soba	15.88	15.88	Parquet
10	Soba	13.52	13.52	Parquet
11	Loda	8.62	6.47	Keramika
UKUPNO:		114.64	110.34	





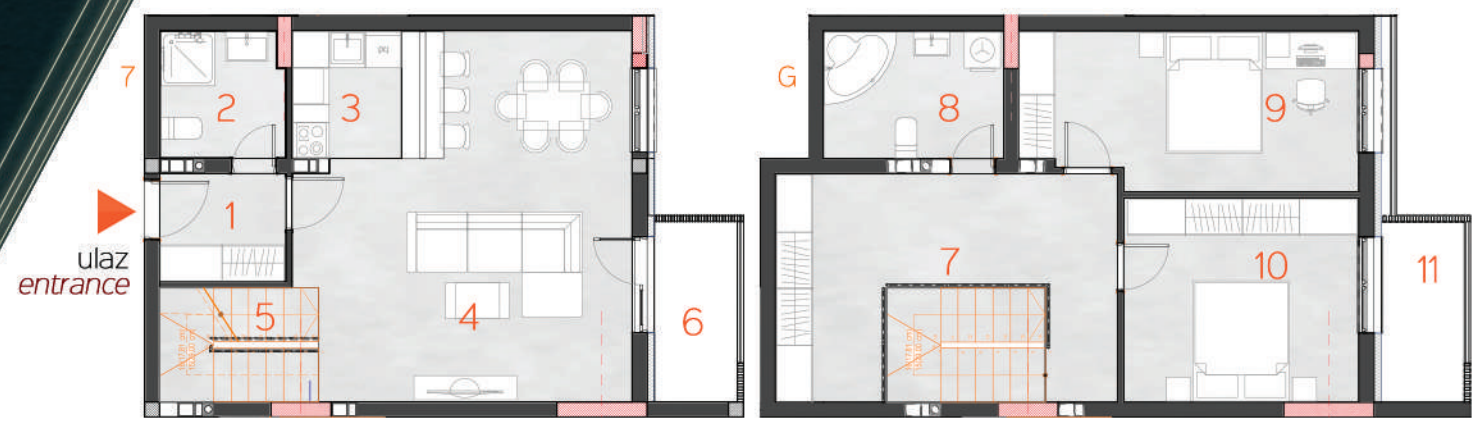


positioning in the building  
 položaj stana u objektu  
 1 2 3 4 5 6 7 G LAMELA 2

apartment number

STAN 51

br.	prostorija	P (m <sup>2</sup> )	P*k (m <sup>2</sup> )	obrada poda
1	Hodnik	3.78	3.78	Keramika
2	Kupatilo	4.37	4.37	Keramika
3	Kuhinja	3.87	3.87	Keramika
4	Dnevni boravak	30.03	30.03	Parket
5	Stepenice	5.02	5.02	Parket
6	Lođa	4.14	3.11	Keramika
7	Hodnik	16.60	16.60	Keramika
8	Kupatilo	6.38	6.38	Keramika
9	Soba	14.33	14.33	Parket
10	Soba	13.29	13.29	Parket
11	Loda	4.14	3.11	Keramika
UKUPNO:		105.95	103.89	







positioning in the building

položaj stana u objektu

1 2 3 4 5 6 7 G LAMELA 2

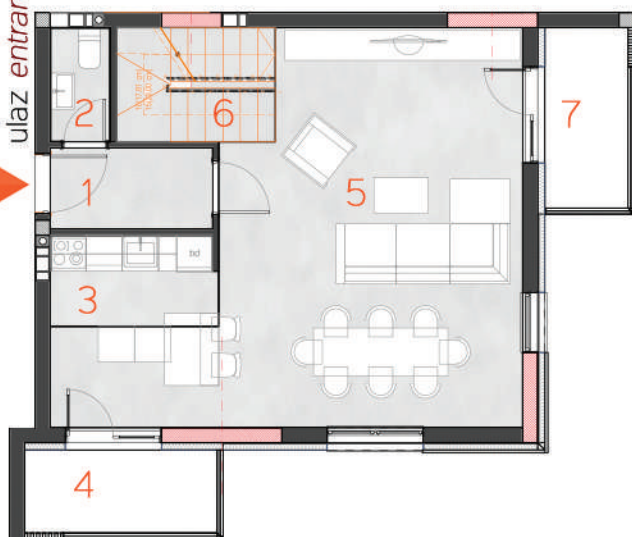
apartment number

### STAN 52

br.	prostorija	P (m <sup>2</sup> )	P*k (m <sup>2</sup> )	obrada poda
1	Hodnik	3.65	3.65	Keramika
2	Toalet	1.90	1.90	Keramika
3	Kuhinja	8.90	8.90	Keramika
4	Loda	4.42	3.32	Keramika
5	Dnevni boravak	31.80	31.80	Parket
6	Stepenice	5.02	5.02	Parket
7	Loda	4.14	3.11	Keramika
8	Hodnik	7.85	7.85	Keramika
9	Kupatilo	6.56	6.56	Keramika
10	Soba	13.23	13.23	Parket
11	Soba	11.91	11.91	Parket
12	Loda	4.42	3.32	Keramika
13	Soba	9.41	9.41	Parket
14	Loda	4.14	3.11	Keramika
UKUPNO:		117.35	113.09	



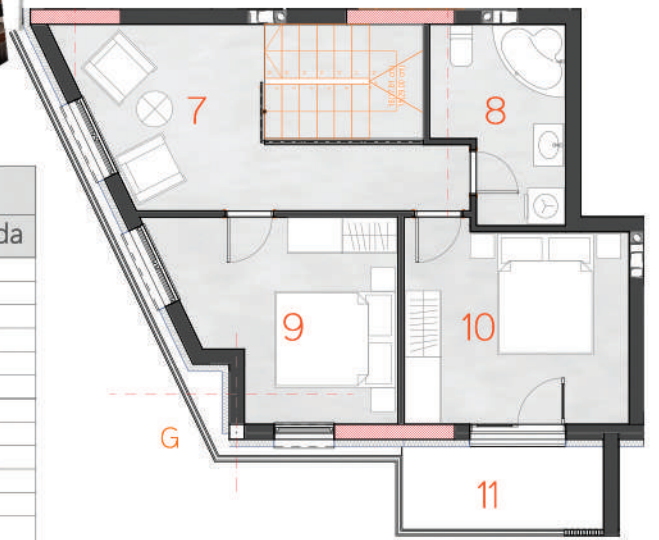
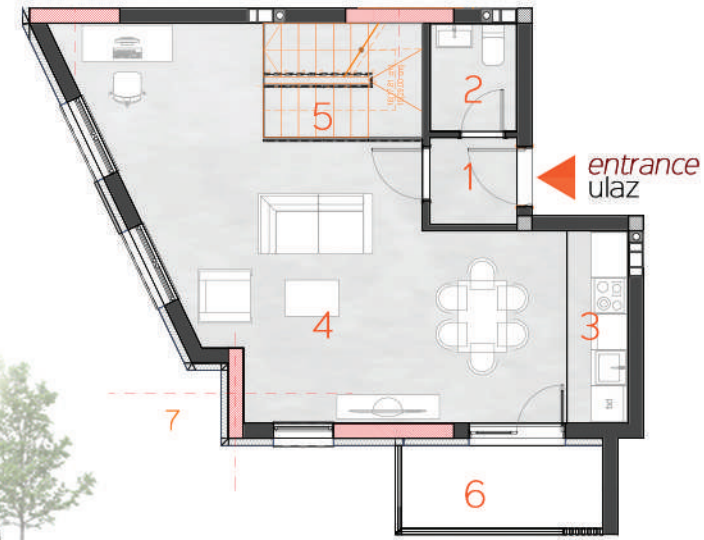
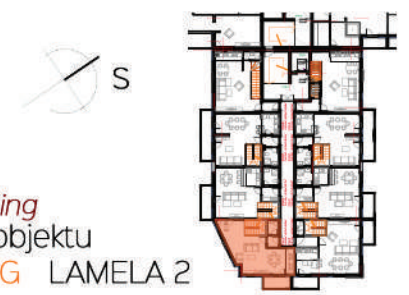
ulaz entrance







positioning in the building  
 položaj stana u objektu  
 1 2 3 4 5 6 7 G LAMELA 2



apartment number

STAN 53

br.	prostorija	P (m <sup>2</sup> )	P*k (m <sup>2</sup> )	obrada poda
1	Hodnik	2.10	2.10	Keramika
2	Toalet	2.61	2.61	Keramika
3	Kuhinja	3.26	3.26	Keramika
4	Dnevni boravak	33.17	33.17	Parket
5	Stepenice	5.02	5.02	Parket
6	Loda	4.62	3.47	Keramika
7	Hodnik	12.69	12.69	Keramika
8	Kupatilo	6.48	6.48	Keramika
9	Soba	11.49	11.49	Parket
10	Soba	12.24	12.24	Parket
11	Loda	4.62	3.47	Keramika
UKUPNO:		98.30	96.00	

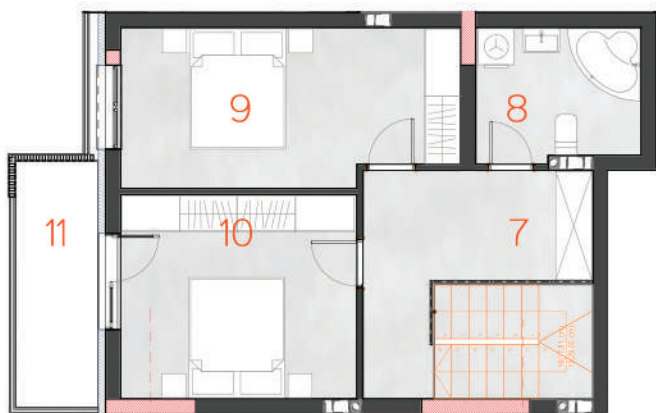




positioning in the building  
 položaj stana u objektu  
 1 2 3 4 5 6 7 G LAMELA 2



ulaz  
 entrance



apartment number

### STAN 54

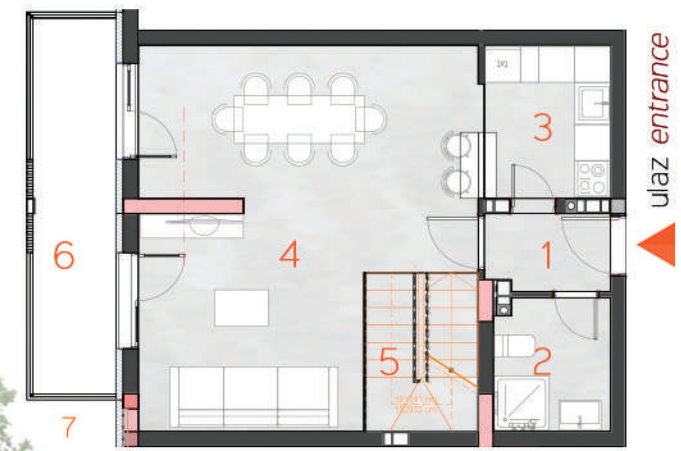
br.	prostorija	P (m <sup>2</sup> )	P*k (m <sup>2</sup> )	obrada poda
1	Hodnik	3.78	3.78	Keramika
2	Kupatilo	4.14	4.14	Keramika
3	Kuhinja	4.14	4.14	Keramika
4	Dnevni boravak	29.85	29.85	Parket
5	Stepenice	5.02	5.02	Parket
6	Loda	5.67	4.25	Keramika
7	Hodnik	9.54	9.54	Keramika
8	Kupatilo	6.02	6.02	Keramika
9	Soba	14.43	14.43	Parket
10	Soba	13.35	13.35	Parket
11	Loda	5.67	4.25	Keramika
UKUPNO:		101.61	98.77	







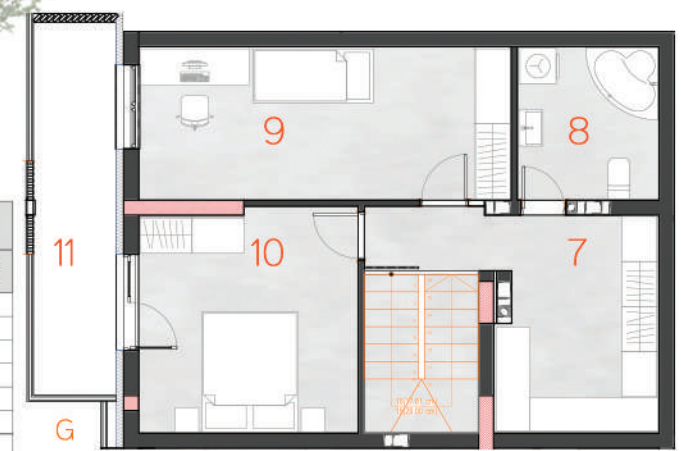
positioning in the building  
 položaj stana u objektu  
 1 2 3 4 5 6 7 G



apartment number

STAN 55

br.	prostorija	P (m <sup>2</sup> )	P*k (m <sup>2</sup> )	obrada poda
1	Hodnik	2.64	2.64	Keramika
2	Kupatilo	4.25	4.25	Keramika
3	Kuhinja	5.36	5.36	Keramika
4	Dnevni boravak	31.04	31.04	Parquet
5	Stepenice	5.02	5.02	Parquet
6	Loda	8.63	6.47	Keramika
7	Hodnik	11.99	11.99	Keramika
8	Kupatilo	6.01	6.01	Keramika
9	Soba	15.80	15.80	Parquet
10	Soba	13.52	13.52	Parquet
11	Loda	8.63	6.47	Keramika
UKUPNO:		112.89	108.57	





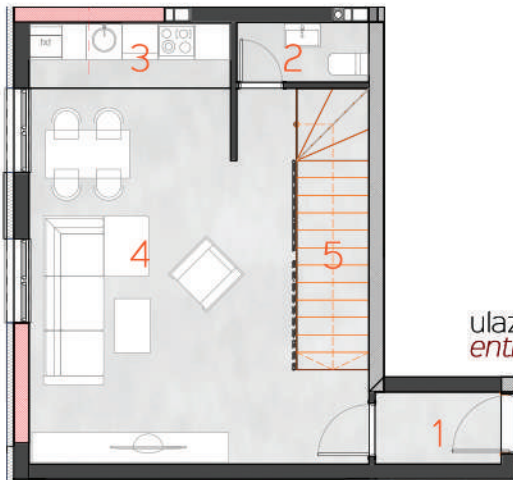


positioning in the building  
 položaj stana u objektu  
 1 2 3 4 5 6 7 G LAMELA 2

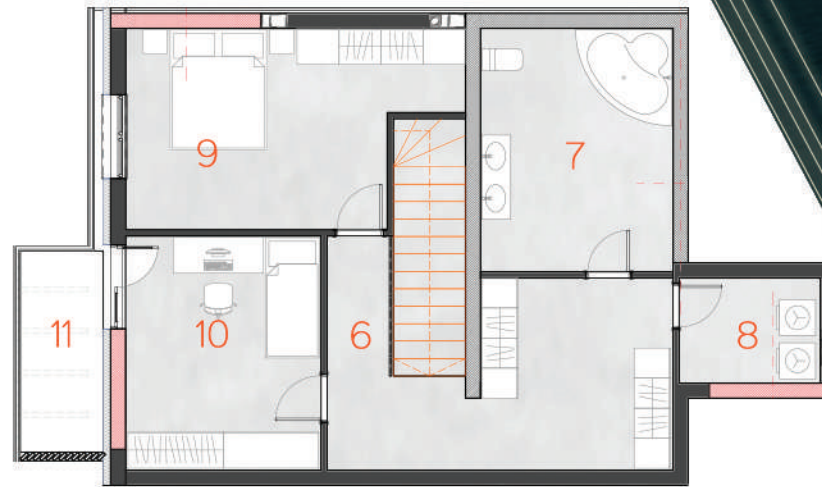
apartment number

**STAN 56**

br.	prostorija	P (m <sup>2</sup> )	P*k (m <sup>2</sup> )	obrada poda
1	Hodnik	2.52	2.52	Keramika
2	Toalet	2.20	2.20	Keramika
3	Kuhinja	3.62	3.62	Keramika
4	Dnevni boravak	29.57	29.57	Parquet
5	Stepenice	5.62	5.62	Parquet
6	Hodnik	16.71	16.71	Keramika
7	Kupatilo	12.96	12.96	Keramika
8	Vešeraj	4.11	4.11	Keramika
9	Soba	16.40	16.40	Parquet
11	Soba	12.67	12.67	Parquet
12	Loda	4.62	3.47	Keramika
UKUPNO:		111.00	109.85	



ulaz  
 entrance







# CASCADIA







# CASCADIA

lux line







# CASCADIA

lux lune







# CASCADIA





- sigurnost
- savremen način života
- lux line



Za sve informacije, možete nas kontaktirati:

telefonom - +387 65 001 003

mejlom - betonplusdoo@gmail.com

lično - Ulica Karađorđeva br. 28, 74000, Doboj



[www.betonplus.org](http://www.betonplus.org)



[www.facebook.com/betonplusdoo.doboj](https://www.facebook.com/betonplusdoo.doboj)



[www.instagram.com/](https://www.instagram.com/)



# CASCADIA

